



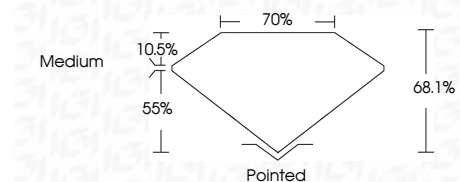
**ELECTRONIC COPY**

LG799698187  
Report verification at igi.org



May 12, 2026  
IGI Report Number **LG799698187**  
Description **LABORATORY GROWN DIAMOND**  
Shape and Cutting Style **PRINCESS CUT**  
Measurements **8.07 X 8.00 X 5.45 MM**

**GRADING RESULTS**  
Carat Weight **3.04 CARATS**  
Color Grade **H**  
Clarity Grade **VVS 2**

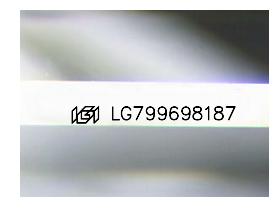


**ADDITIONAL GRADING INFORMATION**  
Polish **EXCELLENT**  
Symmetry **EXCELLENT**  
Fluorescence **NONE**  
Inscription(s) **IGI LG799698187**  
Comments: This Laboratory Grown Diamond was created by Chemical Vapor Deposition (CVD) growth process. Type IIa



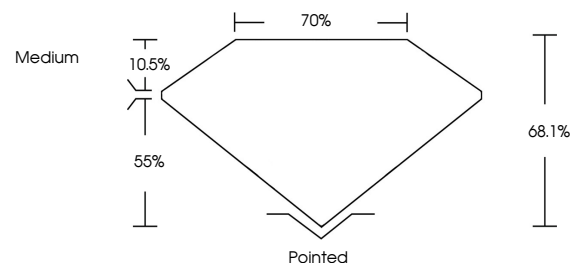
May 12, 2026  
IGI Report No. LG799698187  
**PRINCESS CUT**  
3.04 CARATS **H**  
8.07 X 8.00 X 5.45 MM  
Carat Weight **VVS 2**  
Color Grade **68.1%**  
Clarity Grade **70%**  
Depth **Medium**  
Table **Pointed**  
Girdle **EXCELLENT**  
Culet **EXCELLENT**  
Polish **EXCELLENT**  
Symmetry **NONE**  
Fluorescence **IGI LG799698187**  
Inscription(s)

Comments: This Laboratory Grown Diamond was created by Chemical Vapor Deposition (CVD) growth process. Type IIa

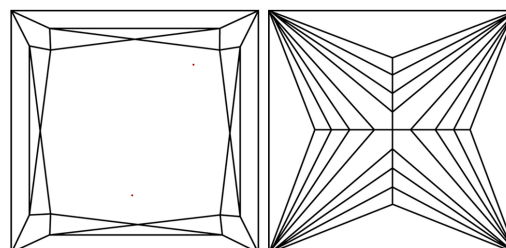


Sample Image Used

**PROPORTIONS**



**CLARITY CHARACTERISTICS**



**KEY TO SYMBOLS**

Red symbols indicate internal characteristics.  
Green symbols indicate external characteristics.

**COLOR**

D E F G H I J Faint Very Light Light

**CLARITY**

FL	IF	VVS <sup>1-2</sup>	VS <sup>1-2</sup>	SI <sup>1-2</sup>	I <sup>1-3</sup>
Flawless	Internally Flawless	Very Very Slightly Included	Very Slightly Included	Slightly Included	Included

