



ELECTRONIC COPY

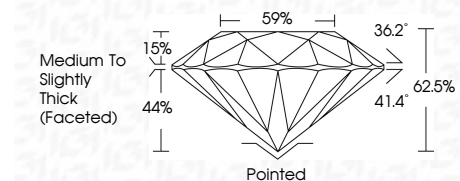
LG799698358 Report verification at igi.org



May 10, 2026 IGI Report Number LG799698358 Description LABORATORY GROWN DIAMOND Shape and Cutting Style ROUND BRILLIANT Measurements 6.58 - 6.60 X 4.12 MM

GRADING RESULTS

Carat Weight 1.10 CARAT Color Grade E Clarity Grade VS 1 Cut Grade EXCELLENT



ADDITIONAL GRADING INFORMATION

Polish EXCELLENT Symmetry EXCELLENT Fluorescence NONE Inscription(s) LG799698358 Comments: This Laboratory Grown Diamond was created by Chemical Vapor Deposition (CVD) growth process. Type IIa



May 10, 2026 IGI Report No LG799698358 ROUND BRILLIANT 1.10 CARAT E VS 1 EXCELLENT 62.5% 59% Medium To Slightly Thick (Faceted) Pointed EXCELLENT EXCELLENT NONE NONE LG799698358

Comments: This Laboratory Grown Diamond was created by Chemical Vapor Deposition (CVD) growth process. Type IIa

LABORATORY GROWN DIAMOND REPORT

May 10, 2026 IGI Report Number LG799698358 Description LABORATORY GROWN DIAMOND Shape and Cutting Style ROUND BRILLIANT Measurements 6.58 - 6.60 X 4.12 MM

GRADING RESULTS

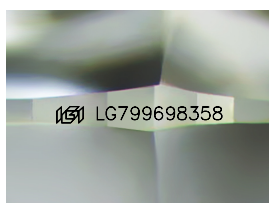
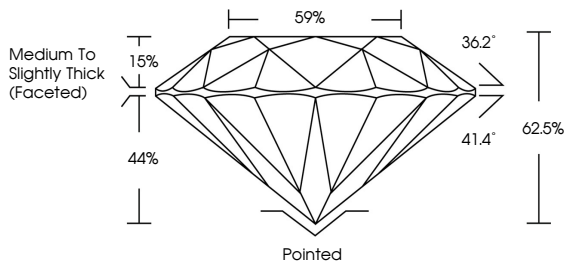
Carat Weight 1.10 CARAT Color Grade E Clarity Grade VS 1 Cut Grade EXCELLENT

ADDITIONAL GRADING INFORMATION

Polish EXCELLENT Symmetry EXCELLENT Fluorescence NONE Inscription(s) LG799698358

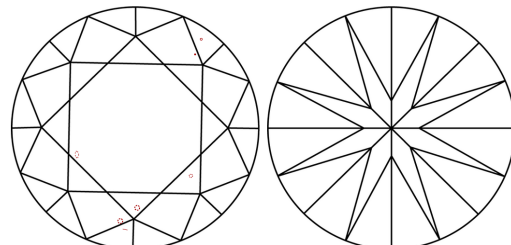
Comments: This Laboratory Grown Diamond was created by Chemical Vapor Deposition (CVD) growth process. Type IIa

PROPORTIONS



Sample Image Used

CLARITY CHARACTERISTICS



KEY TO SYMBOLS

Red symbols indicate internal characteristics. Green symbols indicate external characteristics.

COLOR

Color scale from D to J, with Faint, Very Light, and Light labels.

CLARITY

Clarity scale from FL to I 1-3, with sub-labels: Internally Flawless, Very Very Slightly Included, Very Slightly Included, Slightly Included, Included.

