



ELECTRONIC COPY

LG799698711
Report verification at igi.org



May 7, 2026

IGI Report Number **LG799698711**

Description **LABORATORY GROWN DIAMOND**

Shape and Cutting Style **SQUARE CUSHION MODIFIED
BRILLIANT**

Measurements **5.80 X 5.69 X 3.63 MM**

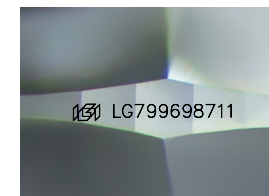
GRADING RESULTS

Carat Weight **1.01 CARAT**

Color Grade **D**

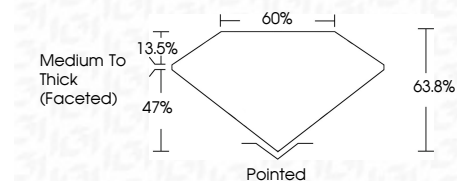
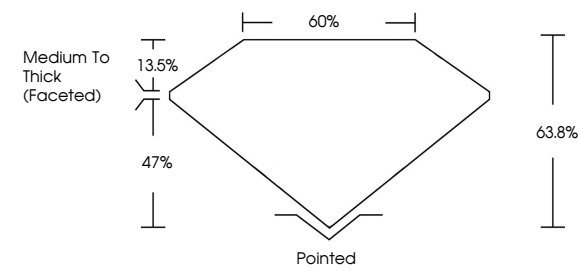
Clarity Grade **VVS 2**

Cut Grade **VERY GOOD**



Sample Image Used

PROPORTIONS



May 7, 2026
IGI Report Number **LG799698711**

Description **LABORATORY GROWN DIAMOND**

Shape and Cutting Style **SQUARE CUSHION MODIFIED
BRILLIANT**

Measurements **5.80 X 5.69 X 3.63 MM**

GRADING RESULTS

Carat Weight **1.01 CARAT**

Color Grade **D**

Clarity Grade **VVS 2**

Cut Grade **VERY GOOD**

ADDITIONAL GRADING INFORMATION

Polish **EXCELLENT**

Symmetry **EXCELLENT**

Fluorescence **NONE**

Inscription(s) **IGI LG799698711**

Comments: As Grown - No indication of post-growth treatment.
This Laboratory Grown Diamond was created by High Pressure High Temperature (HPHT) growth process. Type II

COLOR

D	E	F	G	H	I	J	Faint	Very Light	Light
---	---	---	---	---	---	---	-------	------------	-------

CLARITY

FL	IF	VVS ¹⁻²	VS ¹⁻²	SI ¹⁻²	I ¹⁻³
Flawless	Internally Flawless	Very Very Slightly Included	Very Slightly Included	Slightly Included	Included

ADDITIONAL GRADING INFORMATION

Polish **EXCELLENT**

Symmetry **EXCELLENT**

Fluorescence **NONE**

Inscription(s) **IGI LG799698711**

Comments: As Grown - No indication of post-growth treatment.
This Laboratory Grown Diamond was created by High Pressure High Temperature (HPHT) growth process. Type II



IGI



May 7, 2026	IGI Report No LG799698711	SQUARE CUSHION MODIFIED BRILLIANT	5.80 X 5.69 X 3.63 MM	1.01 CARAT	D	VVS 2	VERY GOOD	63.8%	60%	Medium To Thick (Faceted)	Pointed	EXCELLENT	EXCELLENT	NONE	IGI LG799698711
Culet	Polish	Symmetry	Fluorescence	Inscription(s)	Comments: As Grown - No indication of post-growth treatment. This Laboratory Grown Diamond was created by High Pressure High Temperature (HPHT) growth process. Type II										