



ELECTRONIC COPY

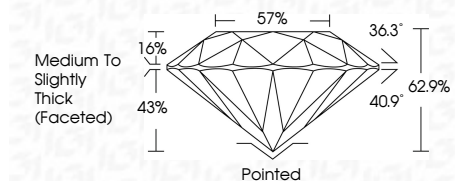
LG800601208 Report verification at igi.org



May 12, 2026 IGI Report Number LG800601208 Description LABORATORY GROWN DIAMOND Shape and Cutting Style ROUND BRILLIANT Measurements 6.51 - 6.54 X 4.11 MM

GRADING RESULTS

Carat Weight 1.08 CARAT Color Grade E Clarity Grade VVS 2 Cut Grade EXCELLENT

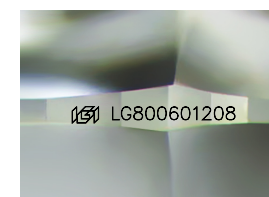


ADDITIONAL GRADING INFORMATION

Polish EXCELLENT Symmetry EXCELLENT Fluorescence NONE Inscription(s) IGI LG800601208 Comments: This Laboratory Grown Diamond was created by Chemical Vapor Deposition (CVD) growth process. Type IIa

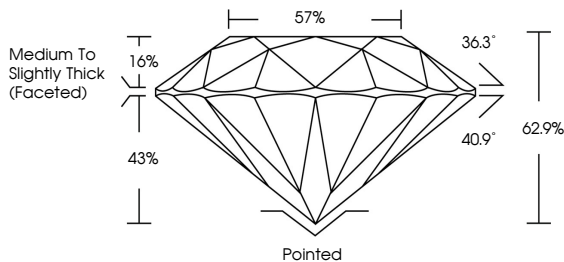


May 12, 2026 IGI Report No LG800601208 ROUND BRILLIANT 6.51 - 6.54 X 4.11 MM 1.08 CARAT E VVS 2 EXCELLENT 62.9% 57% Medium To Slightly Thick (Faceted) Pointed EXCELLENT EXCELLENT NONE NONE IGI LG800601208 Comments: This Laboratory Grown Diamond was created by Chemical Vapor Deposition (CVD) growth process. Type IIa

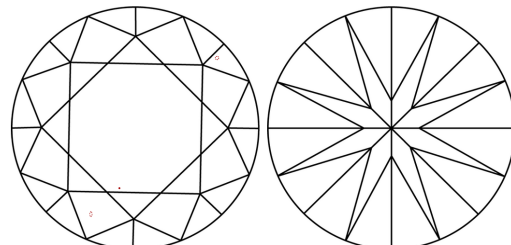


Sample Image Used

PROPORTIONS



CLARITY CHARACTERISTICS



KEY TO SYMBOLS

Red symbols indicate internal characteristics. Green symbols indicate external characteristics.

COLOR

Table with columns D, E, F, G, H, I, J, Faint, Very Light, Light

CLARITY

Table with columns FL, IF, VVS 1-2, VS 1-2, SI 1-2, I 1-3, Flawless, Internally Flawless, Very Very Slightly Included, Very Slightly Included, Slightly Included, Included

