



**ELECTRONIC COPY**

LG800611695  
Report verification at igi.org



May 15, 2026

IGI Report Number **LG800611695**

Description **LABORATORY GROWN DIAMOND**

Shape and Cutting Style **OVAL BRILLIANT**

Measurements **8.87 X 5.88 X 3.46 MM**

**GRADING RESULTS**

Carat Weight **1.15 CARAT**

Color Grade **FANCY VIVID BLUE**

Clarity Grade **VS 1**

May 15, 2026

IGI Report Number **LG800611695**

Description **LABORATORY GROWN DIAMOND**

Shape and Cutting Style **OVAL BRILLIANT**

Measurements **8.87 X 5.88 X 3.46 MM**

**GRADING RESULTS**

Carat Weight **1.15 CARAT**

Color Grade **FANCY VIVID BLUE**

Clarity Grade **VS 1**

**ADDITIONAL GRADING INFORMATION**

Polish **EXCELLENT**

Symmetry **VERY GOOD**

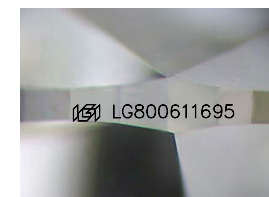
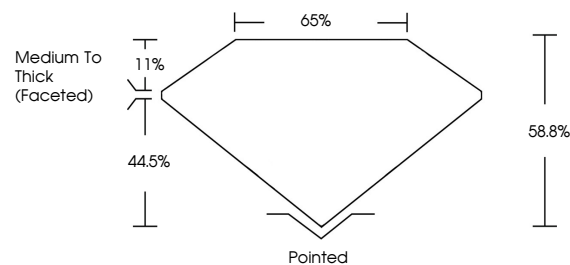
Fluorescence **NONE**

Inscription(s) **IGI LG800611695**

Comments: This Laboratory Grown Diamond was created by Chemical Vapor Deposition (CVD) growth process.

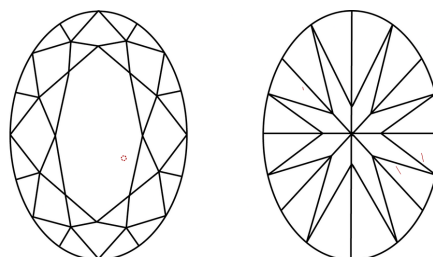
Indications of post-growth treatment.

**PROPORTIONS**



Sample Image Used

**CLARITY CHARACTERISTICS**



**KEY TO SYMBOLS**

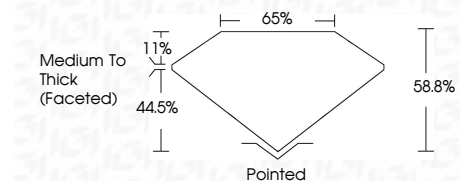
Red symbols indicate internal characteristics.  
Green symbols indicate external characteristics.

**COLOR**

D E F G H I J Faint Very Light Light

**CLARITY**

FL	IF	VS <sup>1-2</sup>	VS <sup>1-2</sup>	SI <sup>1-2</sup>	I <sup>1-3</sup>
Flawless	Internally Flawless	Very Very Slightly Included	Very Slightly Included	Slightly Included	Included



**ADDITIONAL GRADING INFORMATION**

Polish **EXCELLENT**

Symmetry **VERY GOOD**

Fluorescence **NONE**

Inscription(s) **IGI LG800611695**

Comments: This Laboratory Grown Diamond was created by Chemical Vapor Deposition (CVD) growth process.

Indications of post-growth treatment.



**IGI**



May 15, 2026  
IGI Report No LG800611695  
OVAL BRILLIANT  
1.15 CARAT  
8.87 X 5.88 X 3.46 MM  
FANCY VIVID BLUE  
VS 1  
68.6%  
65%  
Medium To Thick (Faceted)  
Pointed  
EXCELLENT  
VERY GOOD  
NONE  
IGI LG800611695

Comments: This Laboratory Grown Diamond was created by Chemical Vapor Deposition (CVD) growth process. Indications of post-growth treatment.