



**ELECTRONIC COPY**

LG800618176  
Report verification at [igi.org](http://igi.org)



May 8, 2026

IGI Report Number **LG800618176**

Description **LABORATORY GROWN DIAMOND**

Shape and Cutting Style **CUSHION BRILLIANT**

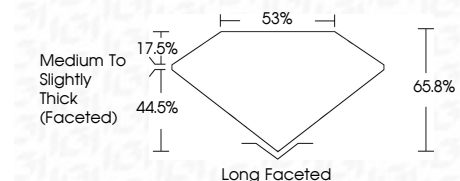
Measurements **9.24 X 7.31 X 4.81 MM**

**GRADING RESULTS**

Carat Weight **2.52 CARATS**

Color Grade **E**

Clarity Grade **VS 2**



**ADDITIONAL GRADING INFORMATION**

Polish **EXCELLENT**

Symmetry **EXCELLENT**

Fluorescence **NONE**

Inscription(s) **IGI LG800618176**

Comments: This Laboratory Grown Diamond was created by Chemical Vapor Deposition (CVD) growth process. Type IIa



May 8, 2026  
IGI Report No. LG800618176  
**CUSHION BRILLIANT**  
9.24 X 7.31 X 4.81 MM  
2.52 CARATS  
E  
65.8%  
44.5%  
17.5%  
Medium to Slightly Thick (Faceted)  
Long Faceted  
EXCELLENT  
EXCELLENT  
NONE  
IGI LG800618176  
Comments: This Laboratory Grown Diamond was created by Chemical Vapor Deposition (CVD) growth process. Type IIa

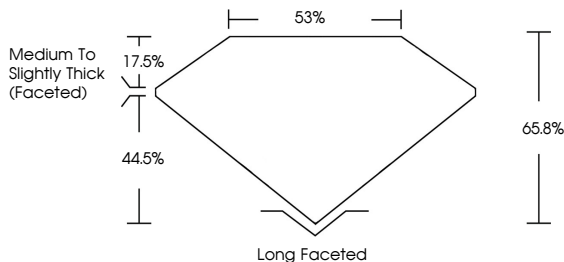
May 8, 2026  
IGI Report Number **LG800618176**  
Description **LABORATORY GROWN DIAMOND**  
Shape and Cutting Style **CUSHION BRILLIANT**  
Measurements **9.24 X 7.31 X 4.81 MM**

**GRADING RESULTS**  
Carat Weight **2.52 CARATS**  
Color Grade **E**  
Clarity Grade **VS 2**

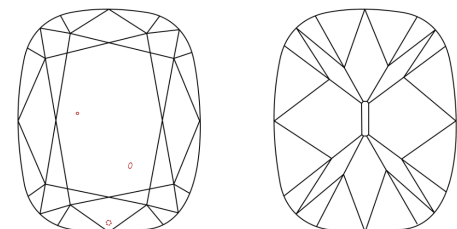
**ADDITIONAL GRADING INFORMATION**  
Polish **EXCELLENT**  
Symmetry **EXCELLENT**  
Fluorescence **NONE**  
Inscription(s) **IGI LG800618176**

Comments: This Laboratory Grown Diamond was created by Chemical Vapor Deposition (CVD) growth process. Type IIa

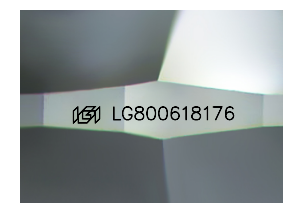
**PROPORTIONS**



**CLARITY CHARACTERISTICS**



**KEY TO SYMBOLS**  
Red symbols indicate internal characteristics.  
Green symbols indicate external characteristics.



Sample Image Used

**COLOR**

D	E	F	G	H	I	J	Faint	Very Light	Light
---	---	---	---	---	---	---	-------	------------	-------

**CLARITY**

FL	IF	VS <sup>1-2</sup>	VS <sup>1-2</sup>	SI <sup>1-2</sup>	I <sup>1-3</sup>
Flawless	Internally Flawless	Very Very Slightly Included	Very Slightly Included	Slightly Included	Included

