



ELECTRONIC COPY

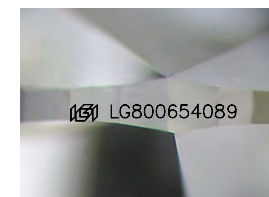
LG800654089
Report verification at igi.org



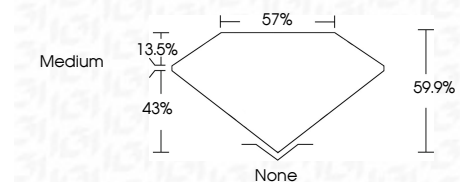
May 9, 2026
IGI Report Number **LG800654089**
Description **LABORATORY GROWN DIAMOND**
Shape and Cutting Style **OVAL POLYGON STEP CUT**
Measurements **9.59 X 6.39 X 3.83 MM**

GRADING RESULTS

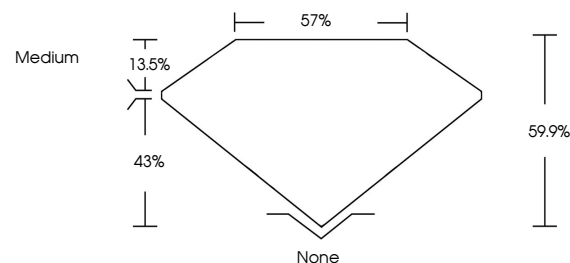
Carat Weight **1.59 CARAT**
Color Grade **D**
Clarity Grade **VVS 2**



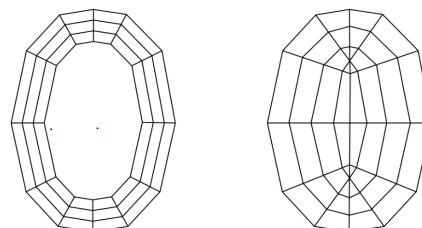
Sample Image Used



PROPORTIONS



CLARITY CHARACTERISTICS



KEY TO SYMBOLS

Red symbols indicate internal characteristics.
Green symbols indicate external characteristics.

COLOR

D E F G H I J Faint Very Light Light

CLARITY

FL	IF	VVS ¹⁻²	VS ¹⁻²	SI ¹⁻²	I ¹⁻³
Flawless	Internally Flawless	Very Very Slightly Included	Very Slightly Included	Slightly Included	Included

ADDITIONAL GRADING INFORMATION

Polish **EXCELLENT**
Symmetry **EXCELLENT**
Fluorescence **NONE**
Inscription(s) **(IGI) LG800654089**
Comments: This Laboratory Grown Diamond was created by Chemical Vapor Deposition (CVD) growth process. Type IIa



IGI



May 9, 2026
IGI Report No. **LG800654089**
OVAL POLYGON STEP CUT
9.59 X 6.39 X 3.83 MM
1.59 CARAT
D
Color Grade **D**
Clarity Grade **VVS 2**
Depth **59.9%**
Table **57%**
Girdle **Medium**
Culet **None**
Polish **EXCELLENT**
Symmetry **EXCELLENT**
Fluorescence **NONE**
Inscription(s) **(IGI) LG800654089**
Comments: This Laboratory Grown Diamond was created by Chemical Vapor Deposition (CVD) growth process. Type IIa