



ELECTRONIC COPY

LG800654993
Report verification at igi.org



May 13, 2026
IGI Report Number LG800654993
Description LABORATORY GROWN DIAMOND
Shape and Cutting Style SQUARE CUSHION MODIFIED BRILLIANT
Measurements 9.42 X 9.30 X 5.84 MM
GRADING RESULTS
Carat Weight 4.76 CARATS
Color Grade FANCY INTENSE PINK
Clarity Grade VVS 2

LABORATORY GROWN DIAMOND REPORT

May 13, 2026
IGI Report Number LG800654993
Description LABORATORY GROWN DIAMOND
Shape and Cutting Style SQUARE CUSHION MODIFIED BRILLIANT
Measurements 9.42 X 9.30 X 5.84 MM

GRADING RESULTS

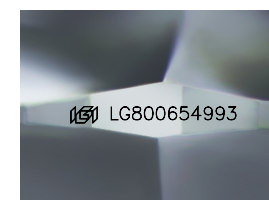
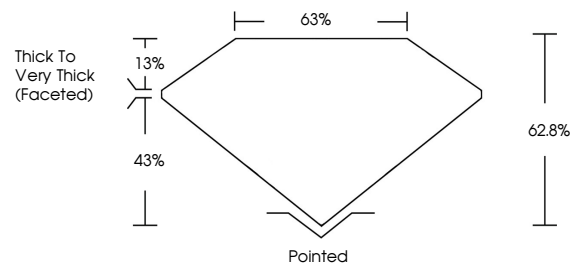
Carat Weight 4.76 CARATS
Color Grade FANCY INTENSE PINK
Clarity Grade VVS 2

ADDITIONAL GRADING INFORMATION

Polish EXCELLENT
Symmetry EXCELLENT
Fluorescence SLIGHT
Inscription(s) IGI LG800654993

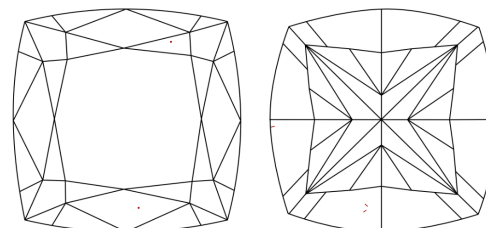
Comments: This Laboratory Grown Diamond was created by Chemical Vapor Deposition (CVD) growth process.
Indications of post-growth treatment.

PROPORTIONS



Sample Image Used

CLARITY CHARACTERISTICS



KEY TO SYMBOLS

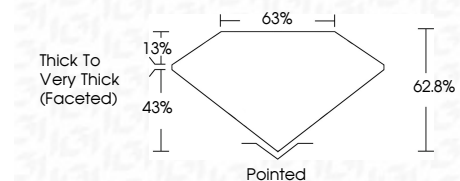
Red symbols indicate internal characteristics.
Green symbols indicate external characteristics.

COLOR

D E F G H I J Faint Very Light Light

CLARITY

FL IF VVS 1-2 VS 1-2 SI 1-2 I 1-3
Flawless Internally Flawless Very Very Slightly Included Very Slightly Included Slightly Included Included



ADDITIONAL GRADING INFORMATION

Polish EXCELLENT
Symmetry EXCELLENT
Fluorescence SLIGHT
Inscription(s) IGI LG800654993
Comments: This Laboratory Grown Diamond was created by Chemical Vapor Deposition (CVD) growth process.
Indications of post-growth treatment.



May 13, 2026
IGI Report No LG800654993
SQUARE CUSHION MODIFIED BRILLIANT
4.76 CARATS
FANCY INTENSE PINK
VVS 2
9.42 X 9.30 X 5.84 MM
62.8%
63%
Thick to Very Thick (Faceted)
Pointed
EXCELLENT
EXCELLENT
SLIGHT
IGI LG800654993
Comments: This Laboratory Grown Diamond was created by Chemical Vapor Deposition (CVD) growth process.
Indications of post-growth treatment.