



ELECTRONIC COPY

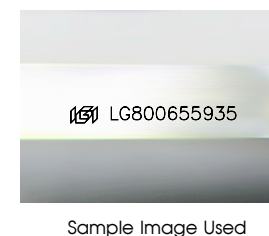
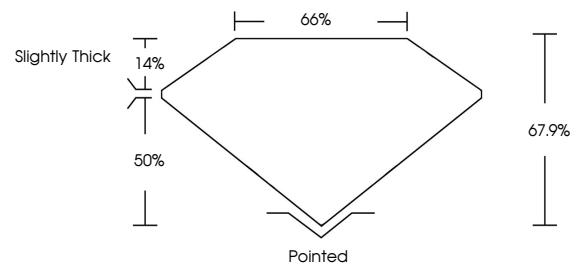
LG800655935
Report verification at igi.org



May 14, 2026
IGI Report Number LG800655935
Description LABORATORY GROWN DIAMOND
Shape and Cutting Style CUT CORNERED RECTANGULAR MODIFIED BRILLIANT
Measurements 13.43 X 9.52 X 6.46 MM
GRADING RESULTS
Carat Weight 7.07 CARATS
Color Grade G
Clarity Grade VS 1

May 14, 2026
IGI Report Number LG800655935
Description LABORATORY GROWN DIAMOND
Shape and Cutting Style CUT CORNERED RECTANGULAR MODIFIED BRILLIANT
Measurements 13.43 X 9.52 X 6.46 MM

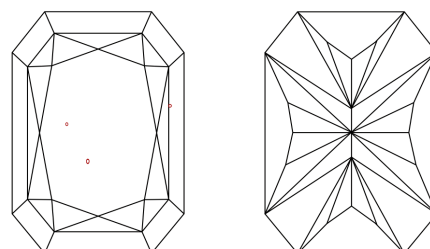
PROPORTIONS



GRADING RESULTS

Carat Weight 7.07 CARATS
Color Grade G
Clarity Grade VS 1

CLARITY CHARACTERISTICS



KEY TO SYMBOLS

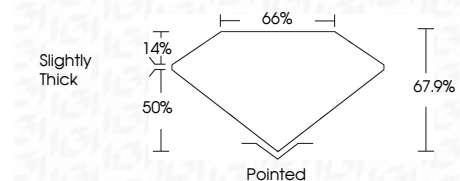
Red symbols indicate internal characteristics.
Green symbols indicate external characteristics.

COLOR

D E F G H I J Faint Very Light Light

CLARITY

FL IF VS 1-2 VS 2-2 SI 1-2 I 1-3
Flawless Internally Flawless Very Very Slightly Included Very Slightly Included Slightly Included Included



ADDITIONAL GRADING INFORMATION

Polish EXCELLENT
Symmetry EXCELLENT
Fluorescence NONE
Inscription(s) IGI LG800655935
Comments: This Laboratory Grown Diamond was created by Chemical Vapor Deposition (CVD) growth process. Type IIa

ADDITIONAL GRADING INFORMATION

Polish EXCELLENT
Symmetry EXCELLENT
Fluorescence NONE
Inscription(s) IGI LG800655935

Comments: This Laboratory Grown Diamond was created by Chemical Vapor Deposition (CVD) growth process. Type IIa



May 14, 2026
IGI Report No LG800655935
CUT CORNERED RECT. MODIFIED BRILLIANT
13.43 X 9.52 X 6.46 MM
7.07 CARATS
G
VS 1
67.9%
66%
Slightly Thick
Pointed
EXCELLENT
EXCELLENT
NONE
IGI LG800655935
Comments: This Laboratory Grown Diamond was created by Chemical Vapor Deposition (CVD) growth process. Type IIa