



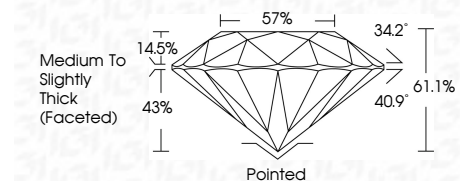
ELECTRONIC COPY

LG800662447
Report verification at igi.org



May 13, 2026
IGI Report Number LG800662447
Description LABORATORY GROWN DIAMOND
Shape and Cutting Style ROUND BRILLIANT
Measurements 7.88 - 7.92 X 4.82 MM

GRADING RESULTS
Carat Weight 1.84 CARAT
Color Grade E
Clarity Grade VVS 2
Cut Grade IDEAL



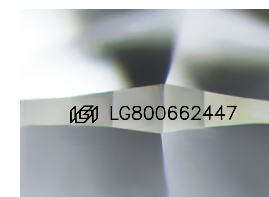
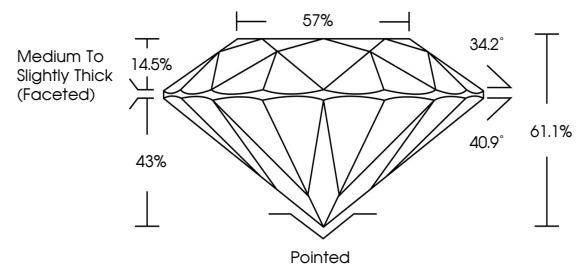
ADDITIONAL GRADING INFORMATION
Polish EXCELLENT
Symmetry EXCELLENT
Fluorescence NONE
Inscription(s) IGI LG800662447
Comments: This Laboratory Grown Diamond was created by Chemical Vapor Deposition (CVD) growth process. Type IIa



May 13, 2026
IGI Report No LG800662447
ROUND BRILLIANT
1.84 CARAT E
7.88 - 7.92 X 4.82 MM
Color Grade VVS 2
Clarity Grade IDEAL
Depth 61.1%
Table 57%
Medium To Slightly Thick (Faceted)
Pointed
Polish EXCELLENT
Symmetry EXCELLENT
Fluorescence NONE
Inscription(s) IGI LG800662447
Comments: This Laboratory Grown Diamond was created by Chemical Vapor Deposition (CVD) growth process. Type IIa

May 13, 2026
IGI Report Number LG800662447
Description LABORATORY GROWN DIAMOND
Shape and Cutting Style ROUND BRILLIANT
Measurements 7.88 - 7.92 X 4.82 MM
GRADING RESULTS
Carat Weight 1.84 CARAT
Color Grade E
Clarity Grade VVS 2
Cut Grade IDEAL

PROPORTIONS



Sample Image Used

COLOR

D E F G H I J Faint Very Light Light

CLARITY

FL IF VS 1-2 VS 1-2 SI 1-2 I 1-3
Flawless Internally Flawless Very Very Slightly Included Very Slightly Included Slightly Included Included

