



ELECTRONIC COPY

LG800663953
Report verification at igi.org



May 15, 2026

IGI Report Number **LG800663953**

Description **LABORATORY GROWN DIAMOND**

Shape and Cutting Style **ROUND BRILLIANT**

Measurements **6.47 - 6.52 X 4.04 MM**

GRADING RESULTS

Carat Weight **1.07 CARAT**

Color Grade **E**

Clarity Grade **VVS 2**

Cut Grade **IDEAL**

May 15, 2026
IGI Report Number **LG800663953**
Description **LABORATORY GROWN DIAMOND**
Shape and Cutting Style **ROUND BRILLIANT**
Measurements **6.47 - 6.52 X 4.04 MM**

GRADING RESULTS

Carat Weight **1.07 CARAT**

Color Grade **E**

Clarity Grade **VVS 2**

Cut Grade **IDEAL**

ADDITIONAL GRADING INFORMATION

Polish **EXCELLENT**

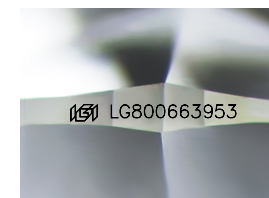
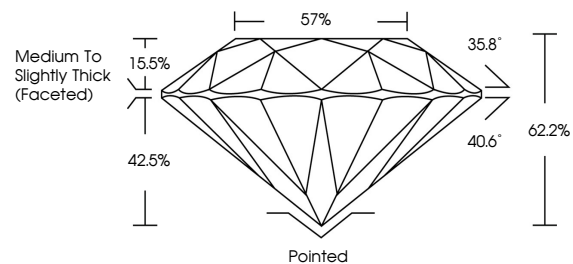
Symmetry **EXCELLENT**

Fluorescence **NONE**

Inscription(s) **LG800663953**

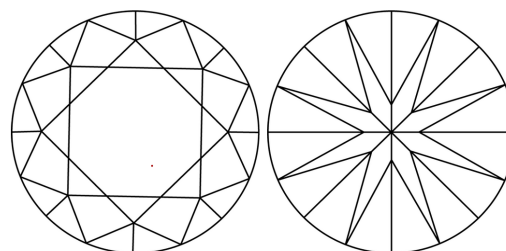
Comments: This Laboratory Grown Diamond was created by Chemical Vapor Deposition (CVD) growth process. Type IIa

PROPORTIONS



Sample Image Used

CLARITY CHARACTERISTICS



KEY TO SYMBOLS

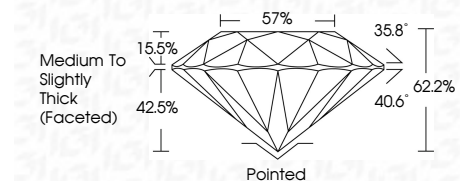
Red symbols indicate internal characteristics.
Green symbols indicate external characteristics.

COLOR

D E F G H I J Faint Very Light Light

CLARITY

FL	IF	VVS ¹⁻²	VS ¹⁻²	SI ¹⁻²	I ¹⁻³
Flawless	Internally Flawless	Very Very Slightly Included	Very Slightly Included	Slightly Included	Included



ADDITIONAL GRADING INFORMATION

Polish **EXCELLENT**

Symmetry **EXCELLENT**

Fluorescence **NONE**

Inscription(s) **LG800663953**

Comments: This Laboratory Grown Diamond was created by Chemical Vapor Deposition (CVD) growth process. Type IIa



IGI



May 15, 2026	IGI Report No. LG800663953	1.07 CARAT	E	Pointed	EXCELLENT	EXCELLENT	NONE	IGI LG800663953
ROUND BRILLIANT	6.47 - 6.52 X 4.04 MM	Color Grade	VVS 2	Depth	IDEAL	62.2%	57%	Medium To Slightly Thick (Faceted)
		Clarity Grade	IDEAL	Cut Grade	EXCELLENT	EXCELLENT	NONE	IGI LG800663953
		Table	15.5%	Grade	EXCELLENT	EXCELLENT	NONE	IGI LG800663953
		Polish	EXCELLENT	Symmetry	EXCELLENT	EXCELLENT	NONE	IGI LG800663953
		Fluorescence	NONE	Inscription(s)	IGI LG800663953			

Comments: This Laboratory Grown Diamond was created by Chemical Vapor Deposition (CVD) growth process. Type IIa