



INTERNATIONAL GEMOLOGICAL INSTITUTE

LABORATORY GROWN DIAMOND REPORT

June 5, 2026
 IGI Report Number **LG800675351**
 Description **LABORATORY GROWN DIAMOND**
 Shape and Cutting Style **ROUND BRILLIANT**
 Measurements **4.38 - 4.41 X 2.71 MM**

GRADING RESULTS

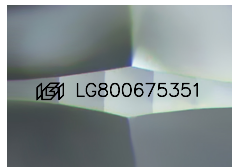
Carat Weight **0.32 CARAT**
 Color Grade **D**
 Clarity Grade **VVS 1**
 Cut Grade **IDEAL**

ADDITIONAL GRADING INFORMATION

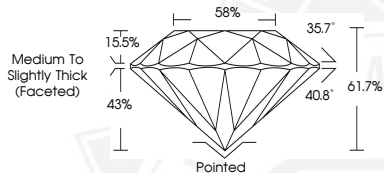
Polish **EXCELLENT**
 Symmetry **EXCELLENT**
 Fluorescence **NONE**
 Inscription(s) **IGI LG800675351**

Comments: As Grown - No indication of post-growth treatment. This Laboratory Grown Diamond was created by High Pressure High Temperature (HPHT) growth process. Type II

ELECTRONIC COPY



Sample Image Used



June 5, 2026
 IGI Report Number **LG800675351**
 ROUND BRILLIANT
 LABORATORY GROWN DIAMOND
 4.38 - 4.41 X 2.71 MM
 Carat Weight **0.32 CARAT**
 Color Grade **D**
 Clarity Grade **VVS 1**
 Cut Grade **IDEAL**
 Polish **EXCELLENT**
 Symmetry **EXCELLENT**
 Fluorescence **NONE**
 Inscription(s) **IGI LG800675351**

Comments: As Grown - No indication of post-growth treatment. This Laboratory Grown Diamond was created by High Pressure High Temperature (HPHT) growth process. Type II



June 5, 2026
 IGI Report Number **LG800675351**
 ROUND BRILLIANT
 LABORATORY GROWN DIAMOND
 4.38 - 4.41 X 2.71 MM
 Carat Weight **0.32 CARAT**
 Color Grade **D**
 Clarity Grade **VVS 1**
 Cut Grade **IDEAL**
 Polish **EXCELLENT**
 Symmetry **EXCELLENT**
 Fluorescence **NONE**
 Inscription(s) **IGI LG800675351**

Comments: As Grown - No indication of post-growth treatment. This Laboratory Grown Diamond was created by High Pressure High Temperature (HPHT) growth process. Type II



THIS DOCUMENT WAS PRODUCED WITH THE FOLLOWING SECURITY MEASURES: SPECIAL DOCUMENT PAPER, INK SCREENS, WATERMARK, BACKGROUND DESIGNS, HOLOGRAM AND OTHER SECURITY FEATURES NOT LISTED AND DO EXCEED DOCUMENT SECURITY INDUSTRY GUIDELINES.

For terms & conditions and to verify this report, please visit www.igi.org