



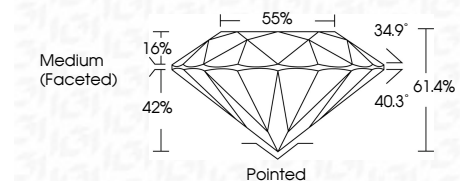
ELECTRONIC COPY

LG800678231
Report verification at igi.org



May 22, 2026
IGI Report Number **LG800678231**
Description **LABORATORY GROWN DIAMOND**
Shape and Cutting Style **ROUND BRILLIANT**
Measurements **7.03 - 7.07 X 4.33 MM**

GRADING RESULTS
Carat Weight **1.32 CARAT**
Color Grade **E**
Clarity Grade **VS 1**
Cut Grade **IDEAL**



ADDITIONAL GRADING INFORMATION
Polish **EXCELLENT**
Symmetry **EXCELLENT**
Fluorescence **NONE**
Inscription(s) **IGI LG800678231**
Comments: As Grown - No indication of post-growth treatment.
This Laboratory Grown Diamond was created by High Pressure High Temperature (HPHT) growth process.
Type II



May 22, 2026
IGI Report No LG800678231
ROUND BRILLIANT
1.32 CARAT
E
VS 1
IDEAL
61.4%
55%
Medium (Faceted)
Pointed
EXCELLENT
EXCELLENT
NONE
IGI LG800678231
Comments: As Grown - No indication of post-growth treatment.
This Laboratory Grown Diamond was created by High Pressure High Temperature (HPHT) growth process.
Type II

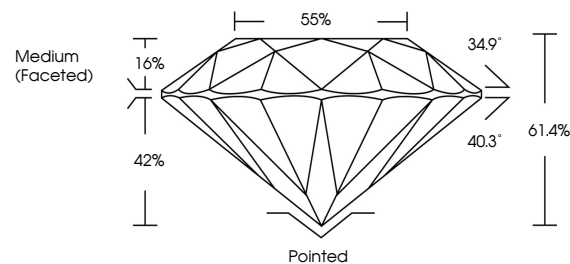
May 22, 2026
IGI Report Number **LG800678231**
Description **LABORATORY GROWN DIAMOND**
Shape and Cutting Style **ROUND BRILLIANT**
Measurements **7.03 - 7.07 X 4.33 MM**

GRADING RESULTS
Carat Weight **1.32 CARAT**
Color Grade **E**
Clarity Grade **VS 1**
Cut Grade **IDEAL**

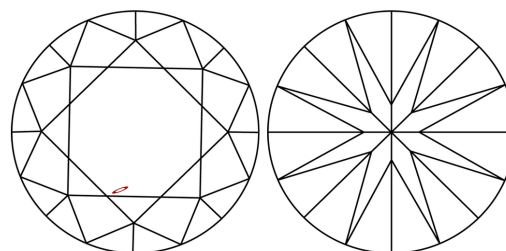
ADDITIONAL GRADING INFORMATION
Polish **EXCELLENT**
Symmetry **EXCELLENT**
Fluorescence **NONE**
Inscription(s) **IGI LG800678231**

Comments: As Grown - No indication of post-growth treatment.
This Laboratory Grown Diamond was created by High Pressure High Temperature (HPHT) growth process.
Type II

PROPORTIONS

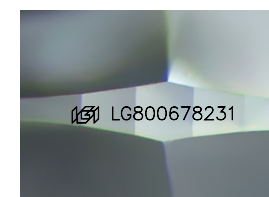


CLARITY CHARACTERISTICS



KEY TO SYMBOLS

Red symbols indicate internal characteristics.
Green symbols indicate external characteristics.



Sample Image Used

COLOR

D E F G H I J Faint Very Light Light

CLARITY

FL	IF	VS ¹⁻²	VS ¹⁻²	SI ¹⁻²	I ¹⁻³
Flawless	Internally Flawless	Very Very Slightly Included	Very Slightly Included	Slightly Included	Included

