



ELECTRONIC COPY

LG801603695
Report verification at igi.org



May 16, 2026

IGI Report Number LG801603695

Description LABORATORY GROWN DIAMOND

Shape and Cutting Style CUT CORNERED RECTANGULAR MODIFIED BRILLIANT

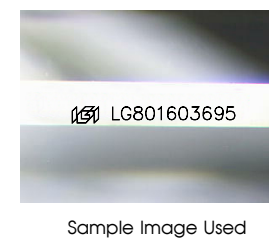
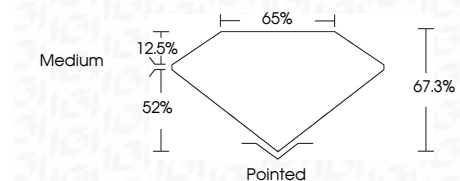
Measurements 10.11 X 7.33 X 4.93 MM

GRADING RESULTS

Carat Weight 3.08 CARATS

Color Grade E

Clarity Grade VS 1



Sample Image Used

ADDITIONAL GRADING INFORMATION

Polish EXCELLENT

Symmetry EXCELLENT

Fluorescence NONE

Inscription(s) LG801603695

Comments: This Laboratory Grown Diamond was created by Chemical Vapor Deposition (CVD) growth process. Type IIa



May 16, 2026
IGI Report No LG801603695
CUT CORNERED RECT. MODIFIED BRILLIANT
10.11 X 7.33 X 4.93 MM
3.08 CARATS
E
VS 1
67.3%
65%
Medium
Pointed
EXCELLENT
EXCELLENT
NONE
LG801603695
Comments: This Laboratory Grown Diamond was created by Chemical Vapor Deposition (CVD) growth process. Type IIa

May 16, 2026

IGI Report Number LG801603695

Description LABORATORY GROWN DIAMOND

Shape and Cutting Style CUT CORNERED RECTANGULAR MODIFIED BRILLIANT

Measurements 10.11 X 7.33 X 4.93 MM

GRADING RESULTS

Carat Weight 3.08 CARATS

Color Grade E

Clarity Grade VS 1

ADDITIONAL GRADING INFORMATION

Polish EXCELLENT

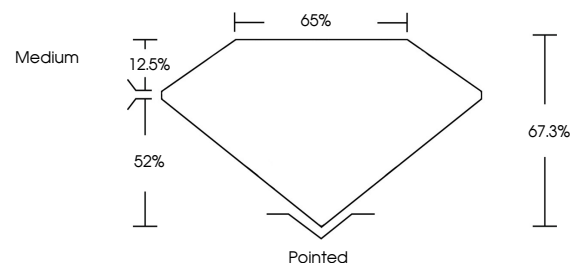
Symmetry EXCELLENT

Fluorescence NONE

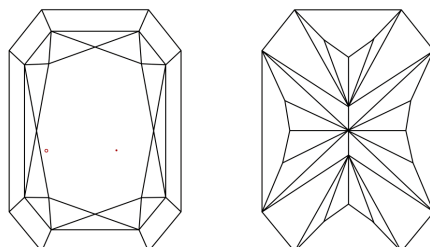
Inscription(s) LG801603695

Comments: This Laboratory Grown Diamond was created by Chemical Vapor Deposition (CVD) growth process. Type IIa

PROPORTIONS



CLARITY CHARACTERISTICS



KEY TO SYMBOLS

Red symbols indicate internal characteristics. Green symbols indicate external characteristics.