



ELECTRONIC COPY

LG801605345 Report verification at igi.org

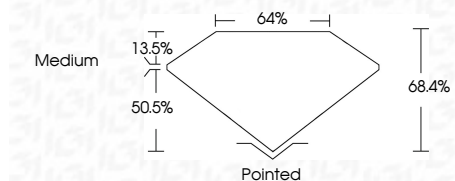


May 16, 2026 IGI Report Number LG801605345 Description LABORATORY GROWN DIAMOND Shape and Cutting Style CUT CORNERED RECTANGULAR MODIFIED BRILLIANT

Measurements 8.88 X 6.23 X 4.26 MM

GRADING RESULTS

Carat Weight 2.06 CARATS Color Grade F Clarity Grade VS 2



ADDITIONAL GRADING INFORMATION

Polish EXCELLENT Symmetry EXCELLENT Fluorescence NONE Inscription(s) LG801605345 Comments: This Laboratory Grown Diamond was created by Chemical Vapor Deposition (CVD) growth process. Type IIa



May 16, 2026 IGI Report Number LG801605345 Description LABORATORY GROWN DIAMOND Shape and Cutting Style CUT CORNERED RECTANGULAR MODIFIED BRILLIANT Measurements 8.88 X 6.23 X 4.26 MM

GRADING RESULTS

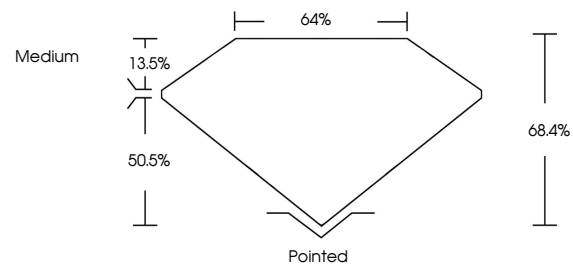
Carat Weight 2.06 CARATS Color Grade F Clarity Grade VS 2

ADDITIONAL GRADING INFORMATION

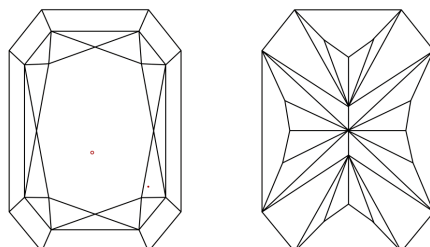
Polish EXCELLENT Symmetry EXCELLENT Fluorescence NONE Inscription(s) LG801605345

Comments: This Laboratory Grown Diamond was created by Chemical Vapor Deposition (CVD) growth process. Type IIa

PROPORTIONS

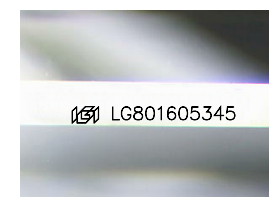


CLARITY CHARACTERISTICS



KEY TO SYMBOLS

Red symbols indicate internal characteristics. Green symbols indicate external characteristics.



Sample Image Used

COLOR

D E F G H I J Faint Very Light Light

CLARITY

FL IF VS 1-2 VS 1-2 SI 1-2 I 1-3 Flawless Internally Flawless Very Very Slightly Included Very Slightly Included Slightly Included Included



May 16, 2026 IGI Report No LG801605345 CUT CORNERED RECT. MODIFIED BRILLIANT 8.88 X 6.23 X 4.26 MM 2.06 CARATS F VS 2 68.4% 50.5% Medium Pointed EXCELLENT EXCELLENT NONE LG801605345 Comments: This Laboratory Grown Diamond was created by Chemical Vapor Deposition (CVD) growth process. Type IIa