



**ELECTRONIC COPY**

LG801606261  
Report verification at igi.org



May 16, 2026

IGI Report Number **LG801606261**

Description **LABORATORY GROWN DIAMOND**

Shape and Cutting Style **PEAR BRILLIANT**

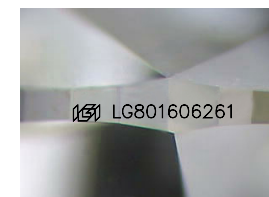
Measurements **10.94 X 7.01 X 4.40 MM**

**GRADING RESULTS**

Carat Weight **2.01 CARATS**

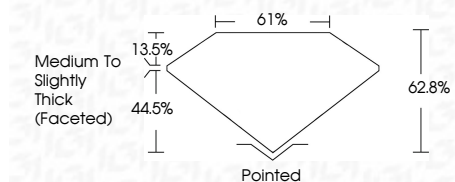
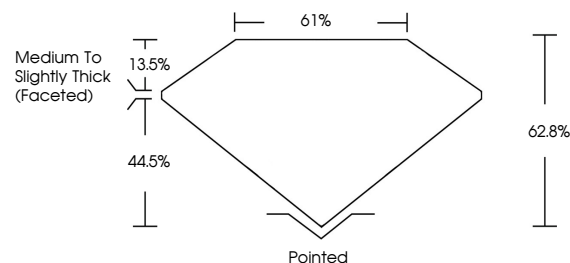
Color Grade **F**

Clarity Grade **VS 1**

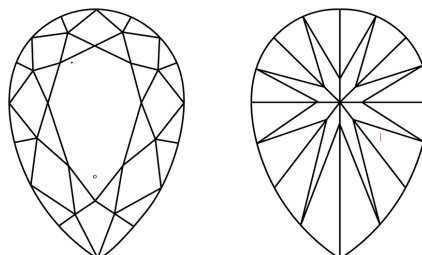


Sample Image Used

**PROPORTIONS**



**CLARITY CHARACTERISTICS**



**KEY TO SYMBOLS**

Red symbols indicate internal characteristics.  
Green symbols indicate external characteristics.

**COLOR**

D E F G H I J Faint Very Light Light

**CLARITY**

FL	IF	VS <sup>1-2</sup>	VS <sup>1-2</sup>	SI <sup>1-2</sup>	I <sup>1-3</sup>
Flawless	Internally Flawless	Very Very Slightly Included	Very Slightly Included	Slightly Included	Included

**ADDITIONAL GRADING INFORMATION**

Polish **EXCELLENT**

Symmetry **VERY GOOD**

Fluorescence **NONE**

Inscription(s) **IGI LG801606261**

Comments: This Laboratory Grown Diamond was created by Chemical Vapor Deposition (CVD) growth process. Type IIa



May 16, 2026  
IGI Report No LG801606261  
PEAR BRILLIANT

2.01 CARATS  
F

10.94 X 7.01 X 4.40 MM

Carat Weight  
Color Grade  
Clarity Grade  
Table  
Depth  
Girdle

2.01  
F  
VS 1  
62.8%  
61%  
Medium to Slightly Thick (Faceted)

Pointed  
EXCELLENT  
VERY GOOD  
NONE  
IGI LG801606261

Culet  
Polish  
Symmetry  
Fluorescence  
Inscription(s)

Comments: This Laboratory Grown Diamond was created by Chemical Vapor Deposition (CVD) growth process. Type IIa