



ELECTRONIC COPY

LG801620598 Report verification at igi.org



June 1, 2026 IGI Report Number LG801620598 Description LABORATORY GROWN DIAMOND Shape and Cutting Style ROUND BRILLIANT Measurements 6.53 - 6.57 X 4.04 MM GRADING RESULTS Carat Weight 1.05 CARAT Color Grade FANCY INTENSE BLUE Clarity Grade VVS 2 Cut Grade IDEAL

June 1, 2026 IGI Report Number LG801620598 Description LABORATORY GROWN DIAMOND Shape and Cutting Style ROUND BRILLIANT Measurements 6.53 - 6.57 X 4.04 MM

GRADING RESULTS

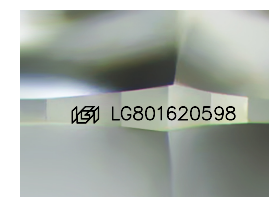
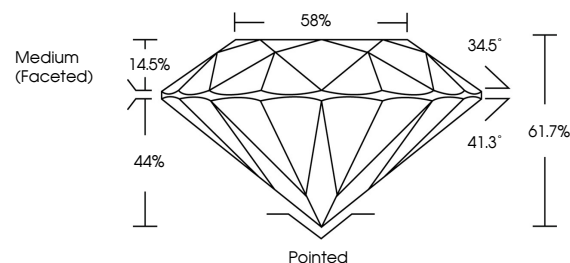
Carat Weight 1.05 CARAT Color Grade FANCY INTENSE BLUE Clarity Grade VVS 2 Cut Grade IDEAL

ADDITIONAL GRADING INFORMATION

Polish EXCELLENT Symmetry EXCELLENT Fluorescence NONE Inscription(s) IGI LG801620598

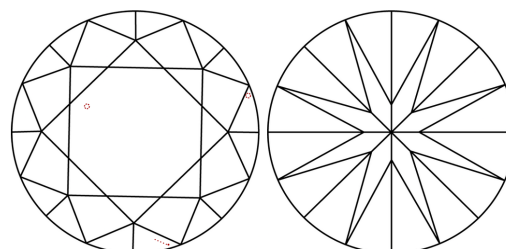
Comments: This Laboratory Grown Diamond was created by Chemical Vapor Deposition (CVD) growth process. Indications of post-growth treatment.

PROPORTIONS



Sample Image Used

CLARITY CHARACTERISTICS



KEY TO SYMBOLS

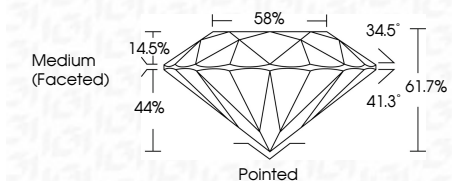
Red symbols indicate internal characteristics. Green symbols indicate external characteristics.

COLOR

D E F G H I J Faint Very Light Light

CLARITY

FL IF VVS 1-2 VS 1-2 SI 1-2 I 1-3 Flawless Internally Flawless Very Very Slightly Included Very Slightly Included Slightly Included Included



ADDITIONAL GRADING INFORMATION

Polish EXCELLENT Symmetry EXCELLENT Fluorescence NONE Inscription(s) IGI LG801620598 Comments: This Laboratory Grown Diamond was created by Chemical Vapor Deposition (CVD) growth process. Indications of post-growth treatment.



June 1, 2026 IGI Report No LG801620598 ROUND BRILLIANT 6.53 - 6.57 X 4.04 MM 1.05 CARAT FANCY INTENSE BLUE VVS 2 IDEAL 61.7% 58% Medium (Faceted) Pointed EXCELLENT EXCELLENT NONE NONE IGI LG801620598 Comments: This Laboratory Grown Diamond was created by Chemical Vapor Deposition (CVD) growth process. Indications of post-growth treatment.