



ELECTRONIC COPY

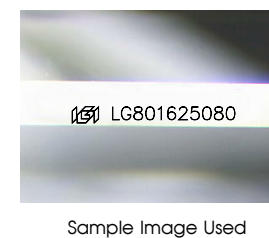
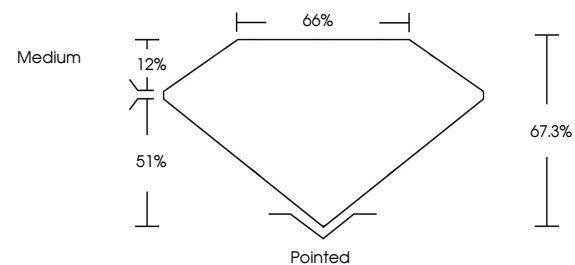
LG801625080 Report verification at igi.org



May 15, 2026 IGI Report Number LG801625080 Description LABORATORY GROWN DIAMOND Shape and Cutting Style CUT CORNERED RECTANGULAR MODIFIED BRILLIANT Measurements 10.15 X 7.15 X 4.81 MM GRADING RESULTS Carat Weight 3.01 CARATS Color Grade E Clarity Grade VVS 2

May 15, 2026 IGI Report Number LG801625080 Description LABORATORY GROWN DIAMOND Shape and Cutting Style CUT CORNERED RECTANGULAR MODIFIED BRILLIANT Measurements 10.15 X 7.15 X 4.81 MM

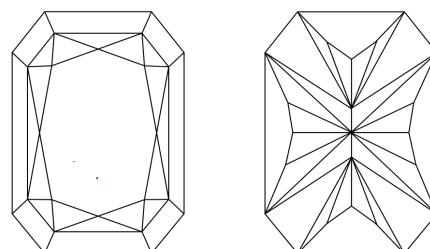
PROPORTIONS



GRADING RESULTS

Carat Weight 3.01 CARATS Color Grade E Clarity Grade VVS 2

CLARITY CHARACTERISTICS



ADDITIONAL GRADING INFORMATION

Polish EXCELLENT Symmetry EXCELLENT Fluorescence NONE Inscription(s) LG801625080

Comments: This Laboratory Grown Diamond was created by Chemical Vapor Deposition (CVD) growth process. Type IIa

KEY TO SYMBOLS

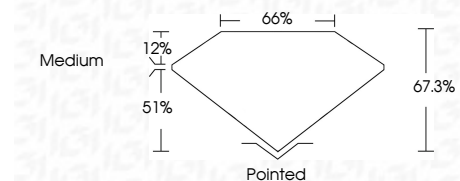
Red symbols indicate internal characteristics. Green symbols indicate external characteristics.

COLOR

D E F G H I J Faint Very Light Light

CLARITY

FL IF VVS 1-2 VS 1-2 SI 1-2 I 1-3 Flawless Internally Flawless Very Very Slightly Included Very Slightly Included Slightly Included Included



ADDITIONAL GRADING INFORMATION

Polish EXCELLENT Symmetry EXCELLENT Fluorescence NONE Inscription(s) LG801625080 Comments: This Laboratory Grown Diamond was created by Chemical Vapor Deposition (CVD) growth process. Type IIa



May 15, 2026 IGI Report No LG801625080 CUT CORNERED RECT. MODIFIED BRILLIANT 10.15 X 7.15 X 4.81 MM 3.01 CARATS E Color Grade VVS 2 Depth 67.3% Table 51% Girdle Medium Culet Pointed Polish EXCELLENT Symmetry EXCELLENT Fluorescence NONE Inscription(s) LG801625080 Comments: This Laboratory Grown Diamond was created by Chemical Vapor Deposition (CVD) growth process. Type IIa