



ELECTRONIC COPY

LG801627058 Report verification at igi.org



May 16, 2026 IGI Report Number LG801627058 Description LABORATORY GROWN DIAMOND Shape and Cutting Style ROUND BRILLIANT Measurements 8.19 - 8.23 X 4.98 MM GRADING RESULTS Carat Weight 2.03 CARATS Color Grade E Clarity Grade VVS 2 Cut Grade IDEAL

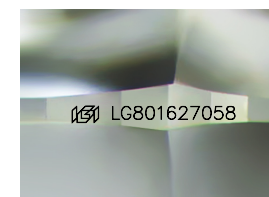
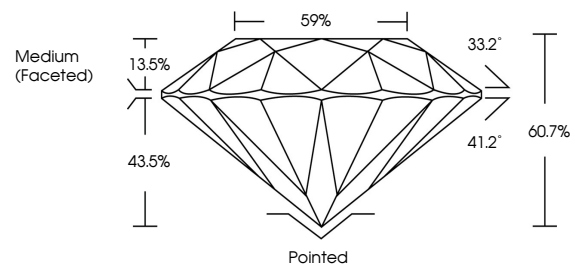
May 16, 2026 IGI Report Number LG801627058 Description LABORATORY GROWN DIAMOND Shape and Cutting Style ROUND BRILLIANT Measurements 8.19 - 8.23 X 4.98 MM GRADING RESULTS Carat Weight 2.03 CARATS Color Grade E Clarity Grade VVS 2 Cut Grade IDEAL

ADDITIONAL GRADING INFORMATION

Polish EXCELLENT Symmetry EXCELLENT Fluorescence NONE Inscription(s) LG801627058

Comments: This Laboratory Grown Diamond was created by Chemical Vapor Deposition (CVD) growth process. Type IIa

PROPORTIONS



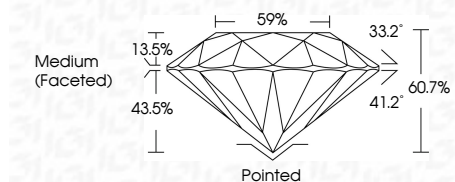
Sample Image Used

COLOR

D E F G H I J Faint Very Light Light

CLARITY

FL IF VS 1-2 VS 1-2 SI 1-2 I 1-3 Flawless Internally Flawless Very Very Slightly Included Very Slightly Included Slightly Included Included



ADDITIONAL GRADING INFORMATION

Polish EXCELLENT Symmetry EXCELLENT Fluorescence NONE Inscription(s) LG801627058 Comments: This Laboratory Grown Diamond was created by Chemical Vapor Deposition (CVD) growth process. Type IIa



May 16, 2026 IGI Report No LG801627058 ROUND BRILLIANT 8.19 - 8.23 X 4.98 MM 2.03 CARATS E Color Grade VVS 2 IDEAL 60.7% 59% Medium (Faceted) Pointed EXCELLENT EXCELLENT NONE LG801627058 Comments: This Laboratory Grown Diamond was created by Chemical Vapor Deposition (CVD) growth process. Type IIa