



**ELECTRONIC COPY**

LG801627561  
Report verification at igi.org



May 21, 2026

IGI Report Number **LG801627561**

Description **LABORATORY GROWN DIAMOND**

Shape and Cutting Style **CUT CORNERED  
RECTANGULAR MODIFIED  
BRILLIANT**

Measurements **7.92 X 5.60 X 3.85 MM**

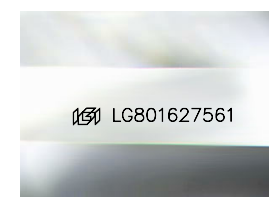
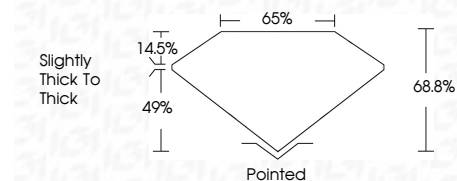
**GRADING RESULTS**

Carat Weight **1.52 CARAT**

Color Grade **D**

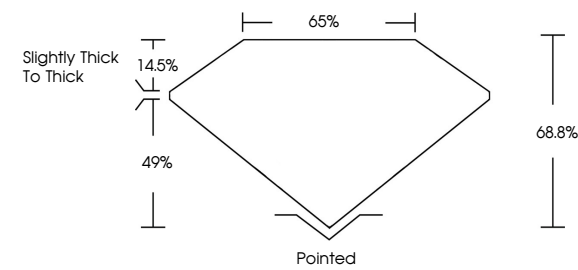
Clarity Grade **VVS 2**

Cut Grade **VERY GOOD**



Sample Image Used

**PROPORTIONS**



**COLOR**

D E F G H I J Faint Very Light Light

**CLARITY**

FL IF VVS<sup>1-2</sup> VS<sup>1-2</sup> SI<sup>1-2</sup> I<sup>1-3</sup>

Flawless Internally Flawless Very Very Slightly Included Very Slightly Included Slightly Included Included

**ADDITIONAL GRADING INFORMATION**

Polish **VERY GOOD**

Symmetry **VERY GOOD**

Fluorescence **NONE**

Inscription(s) **IGI LG801627561**

Comments: This Laboratory Grown Diamond was created by Chemical Vapor Deposition (CVD) growth process. Type IIa



**IGI**



May 21, 2026  
IGI Report No LG801627561  
CUT CORNERED RECT. MODIFIED BRILLIANT  
7.92 X 5.60 X 3.85 MM  
Carat Weight 1.52 CARAT  
Color Grade D  
Clarity Grade VVS 2  
Depth 68.8%  
Table 14.5%  
Girdle 65%  
Slightly Thick to Thick  
Culet Pointed  
Polish VERY GOOD  
Symmetry VERY GOOD  
Fluorescence NONE  
Inscription(s) IGI LG801627561  
Comments: This Laboratory Grown Diamond was created by Chemical Vapor Deposition (CVD) growth process. Type IIa