



**ELECTRONIC COPY**

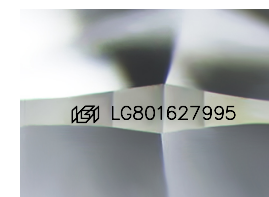
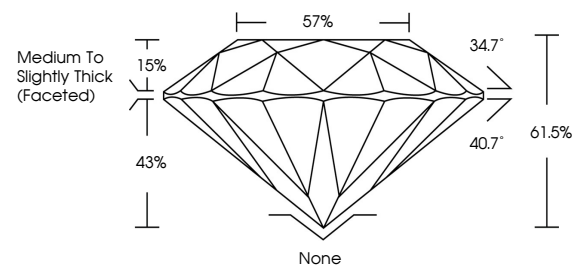
LG801627995  
Report verification at igi.org



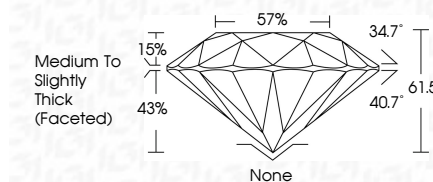
May 22, 2026  
IGI Report Number **LG801627995**  
Description **LABORATORY GROWN DIAMOND**  
Shape and Cutting Style **ROUND BRILLIANT**  
Measurements **11.02 - 11.07 X 6.79 MM**  
**GRADING RESULTS**  
Carat Weight **5.10 CARATS**  
Color Grade **F**  
Clarity Grade **VS 1**  
Cut Grade **IDEAL**

May 22, 2026  
IGI Report Number **LG801627995**  
Description **LABORATORY GROWN DIAMOND**  
Shape and Cutting Style **ROUND BRILLIANT**  
Measurements **11.02 - 11.07 X 6.79 MM**  
**GRADING RESULTS**  
Carat Weight **5.10 CARATS**  
Color Grade **F**  
Clarity Grade **VS 1**  
Cut Grade **IDEAL**

**PROPORTIONS**



Sample Image Used



**ADDITIONAL GRADING INFORMATION**

Polish **EXCELLENT**  
Symmetry **EXCELLENT**  
Fluorescence **NONE**  
Inscription(s) **IGI LG801627995**

Comments: This Laboratory Grown Diamond was created by Chemical Vapor Deposition (CVD) growth process. Type IIa

**ADDITIONAL GRADING INFORMATION**

Polish **EXCELLENT**  
Symmetry **EXCELLENT**  
Fluorescence **NONE**  
Inscription(s) **IGI LG801627995**  
Comments: This Laboratory Grown Diamond was created by Chemical Vapor Deposition (CVD) growth process. Type IIa

**COLOR**

D E F G H I J Faint Very Light Light

**CLARITY**

FL IF VS<sup>1-2</sup> VS<sup>1-2</sup> SI<sup>1-2</sup> I<sup>1-3</sup>  
Flawless Internally Flawless Very Very Slightly Included Very Slightly Included Slightly Included Included



**IGI**



May 22, 2026  
IGI Report No LG801627995  
**ROUND BRILLIANT**  
11.02 - 11.07 X 6.79 MM  
5.10 CARATS  
F  
VS 1  
IDEAL  
61.5%  
57%  
Medium To Slightly Thick (Faceted)  
None  
EXCELLENT  
EXCELLENT  
NONE  
IGI LG801627995  
Comments: This Laboratory Grown Diamond was created by Chemical Vapor Deposition (CVD) growth process. Type IIa