



May 20, 2026

IGI Report Number LG801652964

OVAL BRILLIANT
LABORATORY GROWN DIAMOND

7.28 X 4.48 X 2.80 MM
0.61 CARAT
D
VVS 2
EXCELLENT
EXCELLENT
NONE
Inscription(s) IGI LG801652964

Comments: As Grown - No indication of post-growth treatment. This Laboratory Grown Diamond was created by High Pressure High Temperature (HPHT) growth process. Type II

LABORATORY GROWN DIAMOND REPORT

May 20, 2026
IGI Report Number LG801652964
Description LABORATORY GROWN DIAMOND
Shape and Cutting Style OVAL BRILLIANT
Measurements 7.28 X 4.48 X 2.80 MM

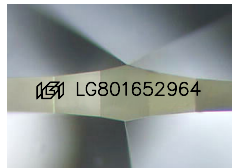
GRADING RESULTS

Carat Weight 0.61 CARAT
Color Grade D
Clarity Grade VVS 2

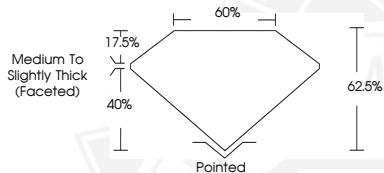
ADDITIONAL GRADING INFORMATION

Polish EXCELLENT
Symmetry EXCELLENT
Fluorescence NONE
Inscription(s) IGI LG801652964

Comments: As Grown - No indication of post-growth treatment. This Laboratory Grown Diamond was created by High Pressure High Temperature (HPHT) growth process. Type II



Sample Image Used



May 20, 2026

IGI Report Number LG801652964

OVAL BRILLIANT
LABORATORY GROWN DIAMOND

7.28 X 4.48 X 2.80 MM
0.61 CARAT
D
VVS 2
EXCELLENT
EXCELLENT
NONE
Inscription(s) IGI LG801652964

Comments: As Grown - No indication of post-growth treatment. This Laboratory Grown Diamond was created by High Pressure High Temperature (HPHT) growth process. Type II



THIS DOCUMENT WAS PRODUCED WITH THE FOLLOWING SECURITY MEASURES: SPECIAL DOCUMENT PAPER, INK SCREENS, WATERMARK, BACKGROUND DESIGNS, HOLOGRAM AND OTHER SECURITY FEATURES NOT LISTED AND DO EXCEED DOCUMENT SECURITY INDUSTRY GUIDELINES.