



ELECTRONIC COPY

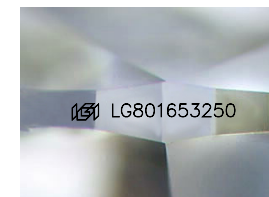
LG801653250
Report verification at igi.org



May 26, 2026
IGI Report Number **LG801653250**
Description **LABORATORY GROWN DIAMOND**

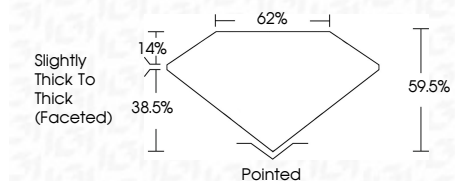
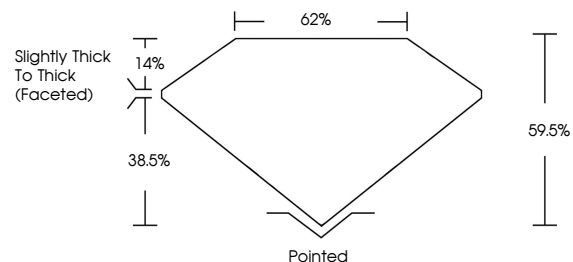
Shape and Cutting Style **PEAR BRILLIANT**
Measurements **21.61 X 13.30 X 7.92 MM**

GRADING RESULTS
Carat Weight **15.19 CARATS**
Color Grade **H**
Clarity Grade **VVS 2**

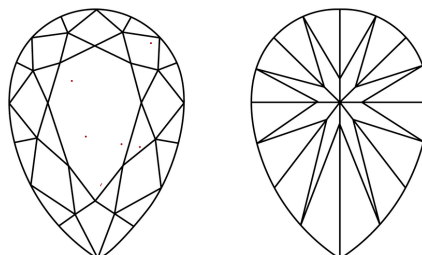


Sample Image Used

PROPORTIONS



CLARITY CHARACTERISTICS



KEY TO SYMBOLS

Red symbols indicate internal characteristics.
Green symbols indicate external characteristics.

COLOR

D E F G H I J Faint Very Light Light

CLARITY

FL	IF	VVS ¹⁻²	VS ¹⁻²	SI ¹⁻²	I ¹⁻³
Flawless	Internally Flawless	Very Very Slightly Included	Very Slightly Included	Slightly Included	Included

ADDITIONAL GRADING INFORMATION

Polish **EXCELLENT**
Symmetry **EXCELLENT**
Fluorescence **NONE**
Inscription(s) **IGI LG801653250**
Comments: This Laboratory Grown Diamond was created by Chemical Vapor Deposition (CVD) growth process. Type IIa



May 26, 2026
IGI Report No LG801653250
PEAR BRILLIANT
21.61 X 13.30 X 7.92 MM
15.19 CARATS
H
VVS 2
EXCELLENT
EXCELLENT
NONE
IGI LG801653250
Pointed
EXCELLENT
EXCELLENT
NONE
IGI LG801653250
Comments: This Laboratory Grown Diamond was created by Chemical Vapor Deposition (CVD) growth process. Type IIa