



ELECTRONIC COPY

LG801663625
Report verification at igi.org



May 21, 2026

IGI Report Number **LG801663625**

Description **LABORATORY GROWN DIAMOND**

Shape and Cutting Style **EMERALD CUT**

Measurements **10.06 X 6.95 X 4.70 MM**

GRADING RESULTS

Carat Weight **3.53 CARATS**

Color Grade **FANCY VIVID GREEN**

Clarity Grade **VS 1**

LABORATORY GROWN DIAMOND REPORT

May 21, 2026

IGI Report Number **LG801663625**

Description **LABORATORY GROWN DIAMOND**

Shape and Cutting Style **EMERALD CUT**

Measurements **10.06 X 6.95 X 4.70 MM**

GRADING RESULTS

Carat Weight **3.53 CARATS**

Color Grade **FANCY VIVID GREEN**

Clarity Grade **VS 1**

ADDITIONAL GRADING INFORMATION

Polish **EXCELLENT**

Symmetry **EXCELLENT**

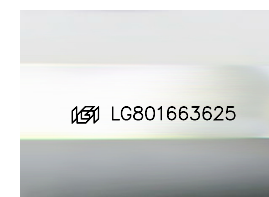
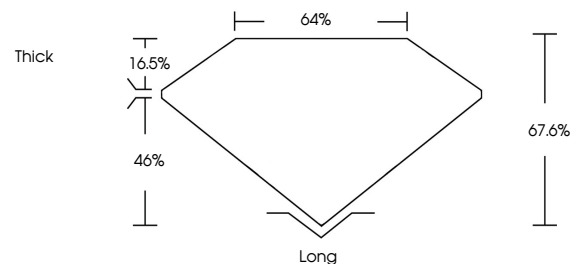
Fluorescence **NONE**

Inscription(s) **IGI LG801663625**

Comments: This Laboratory Grown Diamond was created by Chemical Vapor Deposition (CVD) growth process.

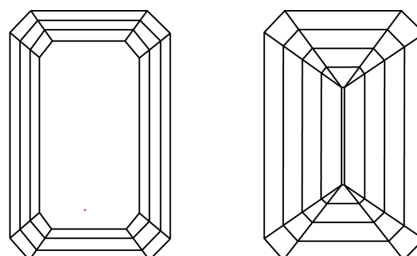
Indications of post-growth treatment.

PROPORTIONS



Sample Image Used

CLARITY CHARACTERISTICS



KEY TO SYMBOLS

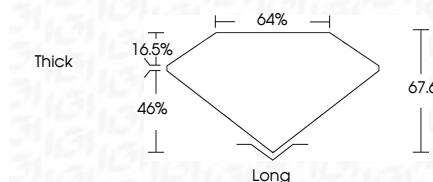
Red symbols indicate internal characteristics.
Green symbols indicate external characteristics.

COLOR

D E F G H I J Faint Very Light Light

CLARITY

FL	IF	VS ¹⁻²	VS ¹⁻²	SI ¹⁻²	I ¹⁻³
Flawless	Internally Flawless	Very Very Slightly Included	Very Slightly Included	Slightly Included	Included



ADDITIONAL GRADING INFORMATION

Polish **EXCELLENT**

Symmetry **EXCELLENT**

Fluorescence **NONE**

Inscription(s) **IGI LG801663625**

Comments: This Laboratory Grown Diamond was created by Chemical Vapor Deposition (CVD) growth process. Indications of post-growth treatment.



May 21, 2026	IGI Report No LG801663625	EMERALD CUT	3.53 CARATS	FANCY VIVID GREEN	VS 1	67.6%	46%	Thick	Long	EXCELLENT	EXCELLENT	NONE	IGI LG801663625
10.06 X 6.95 X 4.70 MM	Carat Weight	Color Grade	Clarity Grade	Depth	Table	Girdle	Culet	Polish	Symmetry	Fluorescence	Inscription(s)		

Comments: This Laboratory Grown Diamond was created by Chemical Vapor Deposition (CVD) growth process. Indications of post-growth treatment.