



ELECTRONIC COPY

LG801663644 Report verification at igi.org



May 26, 2026 IGI Report Number LG801663644 Description LABORATORY GROWN DIAMOND Shape and Cutting Style SQUARE CUSHION MODIFIED BRILLIANT Measurements 7.96 X 7.57 X 5.09 MM GRADING RESULTS Carat Weight 2.57 CARATS Color Grade FANCY INTENSE PINK Clarity Grade VVS 2

May 26, 2026 IGI Report Number LG801663644 Description LABORATORY GROWN DIAMOND Shape and Cutting Style SQUARE CUSHION MODIFIED BRILLIANT Measurements 7.96 X 7.57 X 5.09 MM

GRADING RESULTS

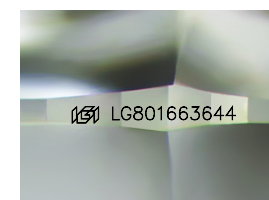
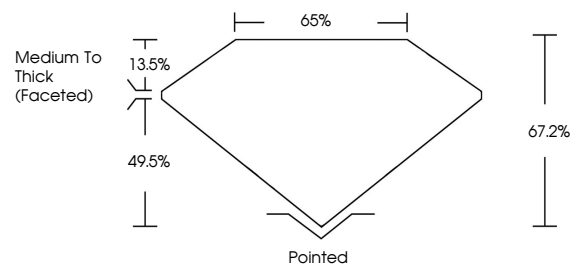
Carat Weight 2.57 CARATS Color Grade FANCY INTENSE PINK Clarity Grade VVS 2

ADDITIONAL GRADING INFORMATION

Polish EXCELLENT Symmetry EXCELLENT Fluorescence SLIGHT Inscription(s) LG801663644

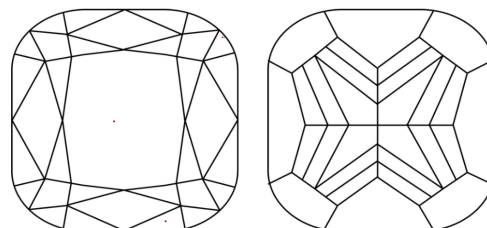
Comments: This Laboratory Grown Diamond was created by Chemical Vapor Deposition (CVD) growth process. Indications of post-growth treatment.

PROPORTIONS



Sample Image Used

CLARITY CHARACTERISTICS



KEY TO SYMBOLS

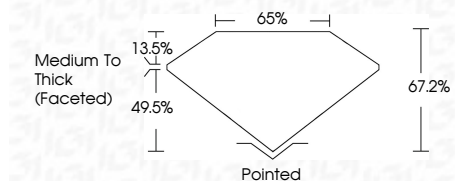
Red symbols indicate internal characteristics. Green symbols indicate external characteristics.

COLOR

D E F G H I J Faint Very Light Light

CLARITY

FL IF VVS 1-2 VS 1-2 SI 1-2 I 1-3 Flawless Internally Flawless Very Very Slightly Included Very Slightly Included Slightly Included Included



ADDITIONAL GRADING INFORMATION

Polish EXCELLENT Symmetry EXCELLENT Fluorescence SLIGHT Inscription(s) LG801663644 Comments: This Laboratory Grown Diamond was created by Chemical Vapor Deposition (CVD) growth process. Indications of post-growth treatment.



May 26, 2026 IGI Report No LG801663644 SQUARE CUSHION MODIFIED BRILLIANT 2.57 CARATS FANCY INTENSE PINK VVS 2 67.2% 65% Medium To Thick (Faceted) Pointed EXCELLENT EXCELLENT SLIGHT LG801663644 Comments: This Laboratory Grown Diamond was created by Chemical Vapor Deposition (CVD) growth process. Indications of post-growth treatment.