



ELECTRONIC COPY

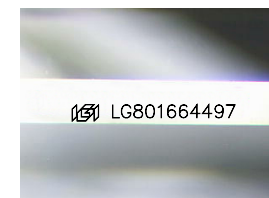
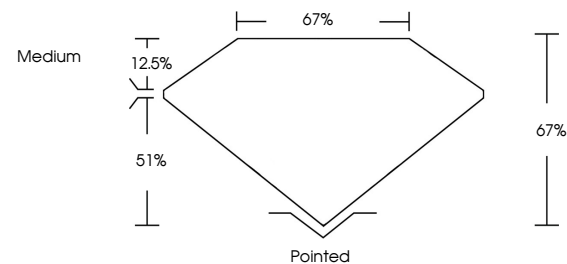
LG801664497
Report verification at igi.org



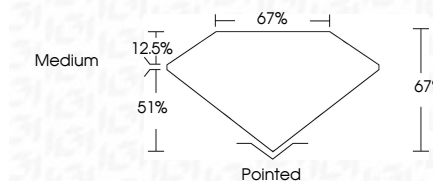
May 23, 2026
IGI Report Number LG801664497
Description LABORATORY GROWN DIAMOND
Shape and Cutting Style CUT CORNERED RECTANGULAR MODIFIED BRILLIANT
Measurements 10.46 X 7.18 X 4.81 MM
GRADING RESULTS
Carat Weight 3.09 CARATS
Color Grade F
Clarity Grade VVS 2

May 23, 2026
IGI Report Number LG801664497
Description LABORATORY GROWN DIAMOND
Shape and Cutting Style CUT CORNERED RECTANGULAR MODIFIED BRILLIANT
Measurements 10.46 X 7.18 X 4.81 MM

PROPORTIONS



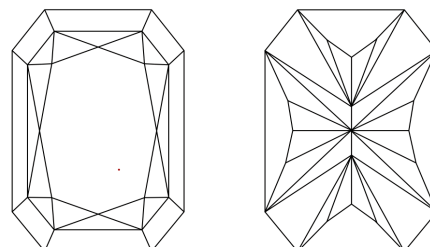
Sample Image Used



GRADING RESULTS

Carat Weight 3.09 CARATS
Color Grade F
Clarity Grade VVS 2

CLARITY CHARACTERISTICS



KEY TO SYMBOLS

Red symbols indicate internal characteristics.
Green symbols indicate external characteristics.

COLOR

D E F G H I J Faint Very Light Light

CLARITY

FL IF VVS 1-2 VS 1-2 SI 1-2 I 1-3
Flawless Internally Flawless Very Very Slightly Included Very Slightly Included Slightly Included Included

ADDITIONAL GRADING INFORMATION

Polish EXCELLENT
Symmetry EXCELLENT
Fluorescence NONE
Inscription(s) LG801664497
Comments: This Laboratory Grown Diamond was created by Chemical Vapor Deposition (CVD) growth process. Type IIa

ADDITIONAL GRADING INFORMATION

Polish EXCELLENT
Symmetry EXCELLENT
Fluorescence NONE
Inscription(s) LG801664497

Comments: This Laboratory Grown Diamond was created by Chemical Vapor Deposition (CVD) growth process. Type IIa



May 23, 2026
IGI Report No LG801664497
CUT CORNERED RECT. MODIFIED BRILLIANT
3.09 CARATS F
3.09 CARATS F
VVS 2
67%
67%
Medium
Pointed
EXCELLENT
EXCELLENT
NONE
LG801664497
Comments: This Laboratory Grown Diamond was created by Chemical Vapor Deposition (CVD) growth process. Type IIa