



ELECTRONIC COPY

LG801664778
Report verification at igi.org



May 19, 2026

IGI Report Number **LG801664778**

Description **LABORATORY GROWN DIAMOND**

Shape and Cutting Style **ROUND BRILLIANT**

Measurements **6.50 - 6.55 X 4.02 MM**

GRADING RESULTS

Carat Weight **1.05 CARAT**

Color Grade **E**

Clarity Grade **VVS 2**

Cut Grade **IDEAL**

May 19, 2026

IGI Report Number **LG801664778**

Description **LABORATORY GROWN DIAMOND**

Shape and Cutting Style **ROUND BRILLIANT**

Measurements **6.50 - 6.55 X 4.02 MM**

GRADING RESULTS

Carat Weight **1.05 CARAT**

Color Grade **E**

Clarity Grade **VVS 2**

Cut Grade **IDEAL**

ADDITIONAL GRADING INFORMATION

Polish **EXCELLENT**

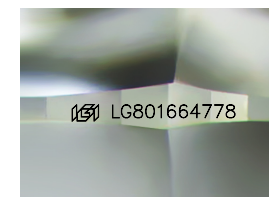
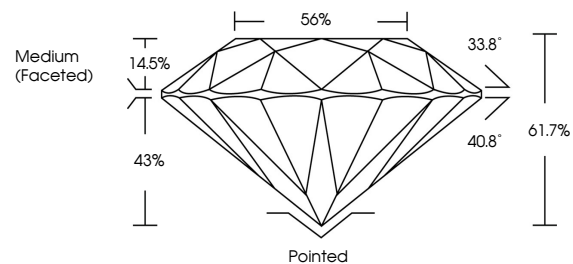
Symmetry **EXCELLENT**

Fluorescence **NONE**

Inscription(s) **IGI LG801664778**

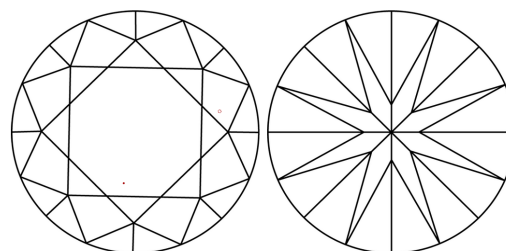
Comments: This Laboratory Grown Diamond was created by Chemical Vapor Deposition (CVD) growth process.
Type IIa

PROPORTIONS



Sample Image Used

CLARITY CHARACTERISTICS



KEY TO SYMBOLS

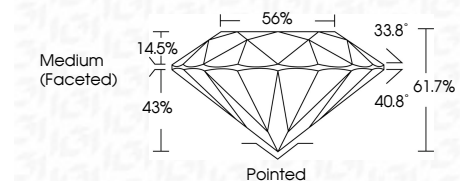
Red symbols indicate internal characteristics.
Green symbols indicate external characteristics.

COLOR

D E F G H I J Faint Very Light Light

CLARITY

FL	IF	VVS ¹⁻²	VS ¹⁻²	SI ¹⁻²	I ¹⁻³
Flawless	Internally Flawless	Very Very Slightly Included	Very Slightly Included	Slightly Included	Included



ADDITIONAL GRADING INFORMATION

Polish **EXCELLENT**

Symmetry **EXCELLENT**

Fluorescence **NONE**

Inscription(s) **IGI LG801664778**

Comments: This Laboratory Grown Diamond was created by Chemical Vapor Deposition (CVD) growth process.
Type IIa



IGI



May 19, 2026	IGI Report No LG801664778	1.05 CARAT	E	Pointed	EXCELLENT	EXCELLENT	NONE	IGI LG801664778	
ROUND BRILLIANT	6.50 - 6.55 X 4.02 MM	Color Grade	VVS 2	Depth	IDEAL	61.7%	56%	Medium (Faceted)	
		Clarity Grade	VVS 2	Cut Grade	IDEAL	61.7%	56%	None	
		Table	14.5%	Grade	IDEAL	61.7%	56%	None	
		Crown	33.8°	Polish	EXCELLENT	Symmetry	EXCELLENT	None	
		Pavilion	40.8°	Fluorescence	NONE	Inscription(s)	IGI LG801664778	None	
		Comments:	This Laboratory Grown Diamond was created by Chemical Vapor Deposition (CVD) growth process.						Type IIa