



ELECTRONIC COPY

LG801672597
Report verification at igi.org

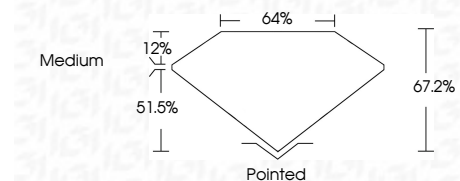


May 18, 2026
IGI Report Number LG801672597
Description LABORATORY GROWN DIAMOND
Shape and Cutting Style CUT CORNERED RECTANGULAR MODIFIED BRILLIANT

Measurements 9.65 X 6.79 X 4.56 MM

GRADING RESULTS

Carat Weight 2.55 CARATS
Color Grade E
Clarity Grade VS 1

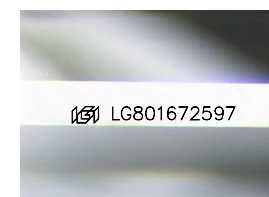


ADDITIONAL GRADING INFORMATION

Polish EXCELLENT
Symmetry EXCELLENT
Fluorescence NONE
Inscription(s) LG801672597
Comments: This Laboratory Grown Diamond was created by Chemical Vapor Deposition (CVD) growth process. Type IIa

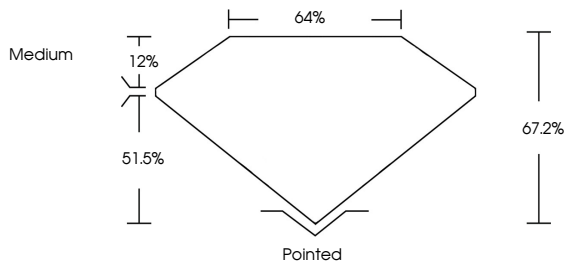


May 18, 2026
IGI Report No LG801672597
CUT CORNERED RECT. MODIFIED BRILLIANT
9.65 X 6.79 X 4.56 MM
2.55 CARATS
E
VS 1
67.2%
64%
51.5%
12%
Medium
Pointed
EXCELLENT
EXCELLENT
NONE
LG801672597
Comments: This Laboratory Grown Diamond was created by Chemical Vapor Deposition (CVD) growth process. Type IIa

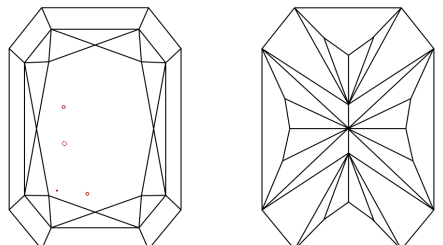


Sample Image Used

PROPORTIONS



CLARITY CHARACTERISTICS



KEY TO SYMBOLS

Red symbols indicate internal characteristics.
Green symbols indicate external characteristics.

COLOR

Table with color scale: D, E, F, G, H, I, J, Faint, Very Light, Light

CLARITY

Table with clarity scale: FL, IF, VS 1-2, VS 1-2, SI 1-2, I 1-3, Flawless, Internally Flawless, Very Very Slightly Included, Very Slightly Included, Slightly Included, Included

