



ELECTRONIC COPY

LG801672695 Report verification at igi.org

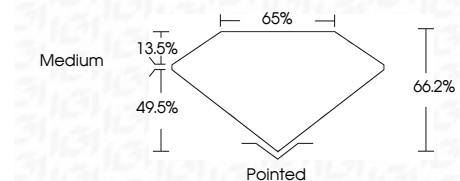


May 21, 2026 IGI Report Number LG801672695 Description LABORATORY GROWN DIAMOND

Shape and Cutting Style CUT CORNERED RECTANGULAR MODIFIED BRILLIANT

Measurements 11.86 X 8.56 X 5.67 MM

GRADING RESULTS Carat Weight 5.03 CARATS Color Grade G Clarity Grade VS 1



ADDITIONAL GRADING INFORMATION

Polish EXCELLENT Symmetry EXCELLENT Fluorescence NONE Inscription(s) LG801672695 Comments: This Laboratory Grown Diamond was created by Chemical Vapor Deposition (CVD) growth process. Type IIa



May 21, 2026 IGI Report No LG801672695 CUT CORNERED RECT. MODIFIED BRILLIANT 11.86 X 8.56 X 5.67 MM 5.03 CARATS G VS 1 66.2% 65% Medium Pointed EXCELLENT EXCELLENT NONE LG801672695 Comments: This Laboratory Grown Diamond was created by Chemical Vapor Deposition (CVD) growth process. Type IIa

LABORATORY GROWN DIAMOND REPORT

May 21, 2026 IGI Report Number LG801672695 Description LABORATORY GROWN DIAMOND Shape and Cutting Style CUT CORNERED RECTANGULAR MODIFIED BRILLIANT Measurements 11.86 X 8.56 X 5.67 MM

GRADING RESULTS

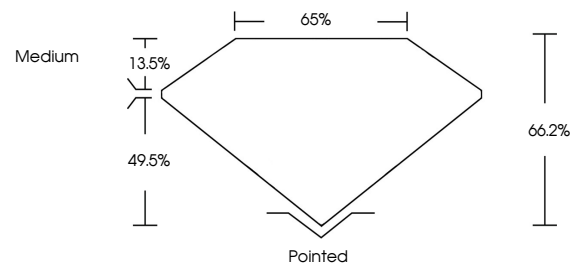
Carat Weight 5.03 CARATS Color Grade G Clarity Grade VS 1

ADDITIONAL GRADING INFORMATION

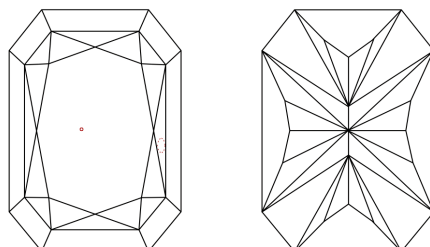
Polish EXCELLENT Symmetry EXCELLENT Fluorescence NONE Inscription(s) LG801672695

Comments: This Laboratory Grown Diamond was created by Chemical Vapor Deposition (CVD) growth process. Type IIa

PROPORTIONS

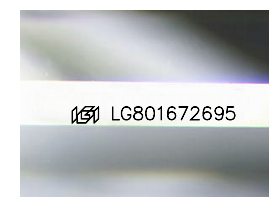


CLARITY CHARACTERISTICS



KEY TO SYMBOLS

Red symbols indicate internal characteristics. Green symbols indicate external characteristics.



Sample Image Used

COLOR

D E F G H I J Faint Very Light Light

CLARITY

FL IF VS 1-2 VS 2-3 SI 1-2 I 1-3 Flawless Internally Flawless Very Very Slightly Included Very Slightly Included Slightly Included Included

