



**INTERNATIONAL  
GEMOLOGICAL  
INSTITUTE**

**ELECTRONIC COPY**

**LABORATORY GROWN DIAMOND REPORT**

May 18, 2026  
IGI Report Number **LG801673653**  
Description **LABORATORY GROWN DIAMOND**  
Shape and Cutting Style **ROUND BRILLIANT**  
Measurements **6.29 - 6.33 X 3.99 MM**

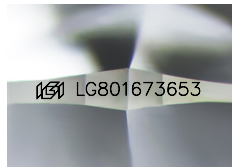
**GRADING RESULTS**

Carat Weight **0.98 CARAT**  
Color Grade **G**  
Clarity Grade **VS 1**  
Cut Grade **EXCELLENT**

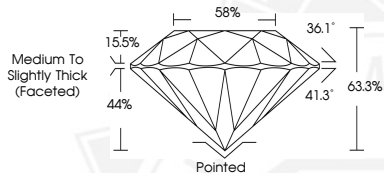
**ADDITIONAL GRADING INFORMATION**

Polish **EXCELLENT**  
Symmetry **EXCELLENT**  
Fluorescence **NONE**  
Inscription(s) **IGI LG801673653**

Comments: This Laboratory Grown Diamond was created by Chemical Vapor Deposition (CVD) growth process. Type IIa



Sample Image Used



May 18, 2026

IGI Report Number **LG801673653**  
**ROUND BRILLIANT**  
**LABORATORY GROWN DIAMOND**  
**6.29 - 6.33 X 3.99 MM**

Carat Weight **0.98 CARAT**  
Color Grade **G**  
Clarity Grade **VS 1**  
Cut Grade **EXCELLENT**  
Polish **EXCELLENT**  
Symmetry **EXCELLENT**  
Fluorescence **NONE**  
Inscription(s) **IGI LG801673653**

Comments: This Laboratory Grown Diamond was created by Chemical Vapor Deposition (CVD) growth process. Type IIa



May 18, 2026

IGI Report Number **LG801673653**  
**ROUND BRILLIANT**  
**LABORATORY GROWN DIAMOND**  
**6.29 - 6.33 X 3.99 MM**

Carat Weight **0.98 CARAT**  
Color Grade **G**  
Clarity Grade **VS 1**  
Cut Grade **EXCELLENT**  
Polish **EXCELLENT**  
Symmetry **EXCELLENT**  
Fluorescence **NONE**  
Inscription(s) **IGI LG801673653**

Comments: This Laboratory Grown Diamond was created by Chemical Vapor Deposition (CVD) growth process. Type IIa



THIS DOCUMENT WAS PRODUCED WITH THE FOLLOWING SECURITY MEASURES: SPECIAL DOCUMENT PAPER, INK SCREENS, WATERMARK, BACKGROUND DESIGNS, HOLOGRAM AND OTHER SECURITY FEATURES NOT LISTED AND DO EXCEED DOCUMENT SECURITY INDUSTRY GUIDELINES.

For terms & conditions and to verify this report, please visit [www.igi.org](http://www.igi.org)