



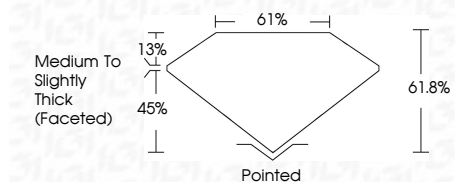
ELECTRONIC COPY

LG801674952 Report verification at igi.org



May 19, 2026 IGI Report Number LG801674952 Description LABORATORY GROWN DIAMOND Shape and Cutting Style PEAR BRILLIANT Measurements 9.03 X 5.60 X 3.46 MM

GRADING RESULTS Carat Weight 1.01 CARAT Color Grade E Clarity Grade VVS 2



ADDITIONAL GRADING INFORMATION Polish EXCELLENT Symmetry EXCELLENT Fluorescence NONE Inscription(s) LG801674952 Comments: This Laboratory Grown Diamond was created by Chemical Vapor Deposition (CVD) growth process. Type IIa



May 19, 2026 IGI Report No LG801674952 PEAR BRILLIANT 1.01 CARAT E 9.03 X 5.60 X 3.46 MM Carat Weight Color Grade VVS 2 Depth 61.8% Table 45% Girdle Medium to Slightly Thick (Faceted) Culet Pointed Polish EXCELLENT Symmetry EXCELLENT Fluorescence NONE Inscription(s) LG801674952 Comments: This Laboratory Grown Diamond was created by Chemical Vapor Deposition (CVD) growth process. Type IIa

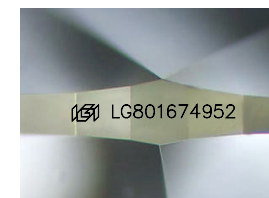
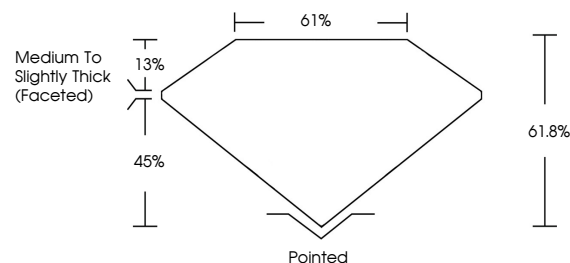
May 19, 2026 IGI Report Number LG801674952 Description LABORATORY GROWN DIAMOND Shape and Cutting Style PEAR BRILLIANT Measurements 9.03 X 5.60 X 3.46 MM

GRADING RESULTS Carat Weight 1.01 CARAT Color Grade E Clarity Grade VVS 2

ADDITIONAL GRADING INFORMATION Polish EXCELLENT Symmetry EXCELLENT Fluorescence NONE Inscription(s) LG801674952

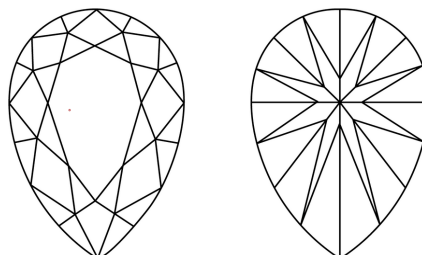
Comments: This Laboratory Grown Diamond was created by Chemical Vapor Deposition (CVD) growth process. Type IIa

PROPORTIONS



Sample Image Used

CLARITY CHARACTERISTICS



KEY TO SYMBOLS

Red symbols indicate internal characteristics. Green symbols indicate external characteristics.

COLOR

D E F G H I J Faint Very Light Light

CLARITY

FL IF VVS 1-2 VS 1-2 SI 1-2 I 1-3 Flawless Internally Flawless Very Very Slightly Included Very Slightly Included Slightly Included Included

