



ELECTRONIC COPY

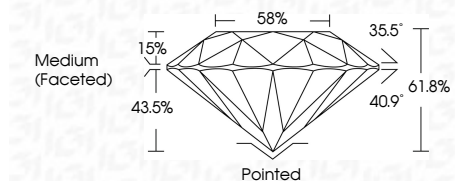
LG801675386
Report verification at igi.org



May 16, 2026
IGI Report Number LG801675386
Description LABORATORY GROWN DIAMOND
Shape and Cutting Style ROUND BRILLIANT
Measurements 11.67 - 11.71 X 7.23 MM

GRADING RESULTS

Carat Weight 6.07 CARATS
Color Grade D
Clarity Grade VVS 2
Cut Grade IDEAL



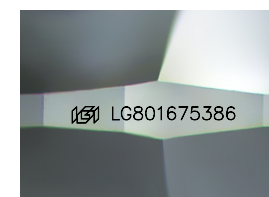
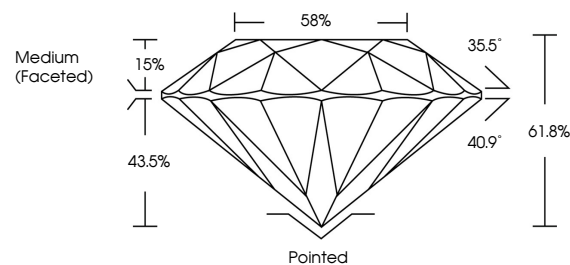
ADDITIONAL GRADING INFORMATION

Polish EXCELLENT
Symmetry EXCELLENT
Fluorescence NONE
Inscription(s) IGI LG801675386
Comments: This Laboratory Grown Diamond was created by Chemical Vapor Deposition (CVD) growth process. Type IIa



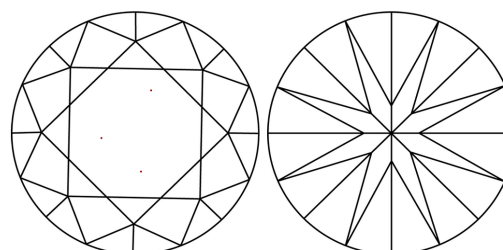
Table with 2 columns: Property and Value. Includes Carat Weight (6.07 CARATS), Color Grade (D), Clarity Grade (VVS 2), Cut Grade (IDEAL), Depth (61.8%), Table (58%), Girdle (Medium (Faceted)), and other grading details.

PROPORTIONS



Sample Image Used

CLARITY CHARACTERISTICS



KEY TO SYMBOLS

Red symbols indicate internal characteristics.
Green symbols indicate external characteristics.

COLOR

D E F G H I J Faint Very Light Light

CLARITY

Table with 6 columns: FL, IF, VS 1-2, VS 1-2, SI 1-2, I 1-3. Row: Flawless, Internally Flawless, Very Very Slightly Included, Very Slightly Included, Slightly Included, Included



May 16, 2026

IGI Report No LG801675386

ROUND BRILLIANT

11.67 - 11.71 X 7.23 MM

6.07 CARATS

D

VVS 2

IDEAL

61.8%

58%

Medium (Faceted)

Pointed

EXCELLENT

EXCELLENT

NONE

NONE

IGI LG801675386

Comments: This Laboratory Grown Diamond was created by Chemical Vapor Deposition (CVD) growth process. Type IIa