



**ELECTRONIC COPY**

LG801675684  
Report verification at [igi.org](http://igi.org)



May 27, 2026  
IGI Report Number **LG801675684**  
Description **LABORATORY GROWN DIAMOND**  
Shape and Cutting Style **OVAL MODIFIED BRILLIANT**  
Measurements **12.17 X 8.47 X 5.52 MM**  
**GRADING RESULTS**  
Carat Weight **4.52 CARATS**  
Color Grade **FANCY VIVID YELLOW**  
Clarity Grade **VS 2**

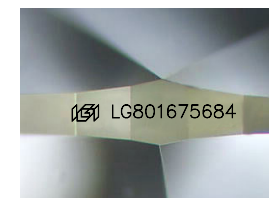
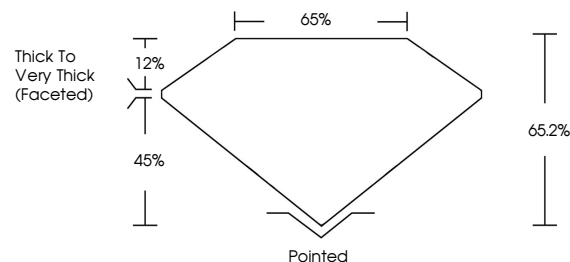
May 27, 2026  
IGI Report Number **LG801675684**  
Description **LABORATORY GROWN DIAMOND**  
Shape and Cutting Style **OVAL MODIFIED BRILLIANT**  
Measurements **12.17 X 8.47 X 5.52 MM**

**GRADING RESULTS**  
Carat Weight **4.52 CARATS**  
Color Grade **FANCY VIVID YELLOW**  
Clarity Grade **VS 2**

**ADDITIONAL GRADING INFORMATION**  
Polish **EXCELLENT**  
Symmetry **EXCELLENT**  
Fluorescence **NONE**  
Inscription(s) **IGI LG801675684**

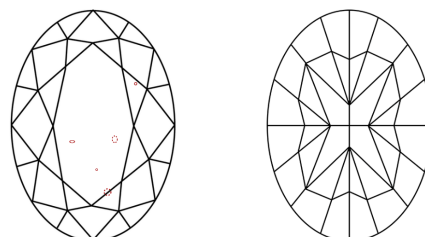
Comments: This Laboratory Grown Diamond was created by Chemical Vapor Deposition (CVD) growth process.

**PROPORTIONS**



Sample Image Used

**CLARITY CHARACTERISTICS**



**KEY TO SYMBOLS**

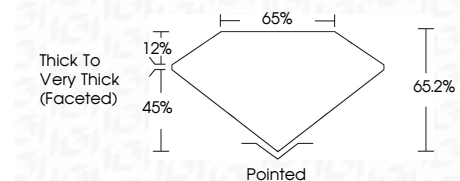
Red symbols indicate internal characteristics.  
Green symbols indicate external characteristics.

**COLOR**

D E F G H I J Faint Very Light Light

**CLARITY**

FL	IF	VS <sup>1-2</sup>	VS <sup>1-2</sup>	SI <sup>1-2</sup>	I <sup>1-3</sup>
Flawless	Internally Flawless	Very Very Slightly Included	Very Slightly Included	Slightly Included	Included



**ADDITIONAL GRADING INFORMATION**

Polish **EXCELLENT**  
Symmetry **EXCELLENT**  
Fluorescence **NONE**  
Inscription(s) **IGI LG801675684**  
Comments: This Laboratory Grown Diamond was created by Chemical Vapor Deposition (CVD) growth process.



**IGI**



May 27, 2026  
IGI Report No LG801675684  
**OVAL MODIFIED BRILLIANT**  
12.17 X 8.47 X 5.52 MM  
4.52 CARATS  
FANCY VIVID YELLOW  
VS 2  
65.2%  
65%  
Thick to Very Thick (Faceted)  
Pointed  
EXCELLENT  
EXCELLENT  
NONE  
IGI LG801675684  
Comments: This Laboratory Grown Diamond was created by Chemical Vapor Deposition (CVD) growth process.