



ELECTRONIC COPY

LG801696951
Report verification at igi.org



May 16, 2026

IGI Report Number **LG801696951**

Description **LABORATORY GROWN DIAMOND**

Shape and Cutting Style **ROUND BRILLIANT**

Measurements **6.45 - 6.49 X 3.93 MM**

GRADING RESULTS

Carat Weight **1.01 CARAT**

Color Grade **E**

Clarity Grade **VS 2**

Cut Grade **IDEAL**

May 16, 2026

IGI Report Number **LG801696951**

Description **LABORATORY GROWN DIAMOND**

Shape and Cutting Style **ROUND BRILLIANT**

Measurements **6.45 - 6.49 X 3.93 MM**

GRADING RESULTS

Carat Weight **1.01 CARAT**

Color Grade **E**

Clarity Grade **VS 2**

Cut Grade **IDEAL**

ADDITIONAL GRADING INFORMATION

Polish **EXCELLENT**

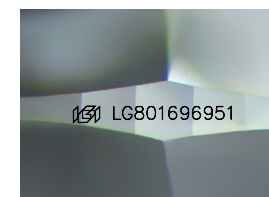
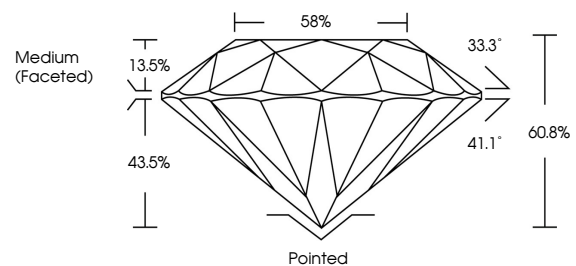
Symmetry **EXCELLENT**

Fluorescence **NONE**

Inscription(s) **IGI LG801696951**

Comments: This Laboratory Grown Diamond was created by Chemical Vapor Deposition (CVD) growth process. Type IIa

PROPORTIONS



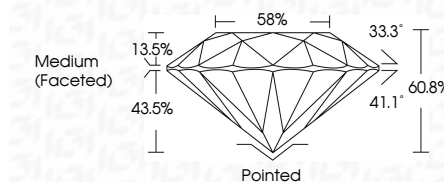
Sample Image Used

COLOR

D E F G H I J Faint Very Light Light

CLARITY

FL	IF	VS ¹⁻²	VS ¹⁻²	SI ¹⁻²	I ¹⁻³
Flawless	Internally Flawless	Very Very Slightly Included	Very Slightly Included	Slightly Included	Included



ADDITIONAL GRADING INFORMATION

Polish **EXCELLENT**

Symmetry **EXCELLENT**

Fluorescence **NONE**

Inscription(s) **IGI LG801696951**

Comments: This Laboratory Grown Diamond was created by Chemical Vapor Deposition (CVD) growth process. Type IIa



IGI



May 16, 2026	1.01 CARAT	E	Pointed
IGI Report No LG801696951	EXCELLENT	VS 2	EXCELLENT
ROUND BRILLIANT	IDEAL	60.8%	EXCELLENT
6.45 - 6.49 X 3.93 MM	Medium (Faceted)	88%	NONE
Carat Weight	1.01 CARAT		IGI LG801696951
Color Grade	E		
Clarity Grade	VS 2		
Cut Grade	IDEAL		
Depth	60.8%		
Table	13.5%		
Girdle	43.5%		
Culet	Pointed		
Polish	EXCELLENT		
Symmetry	EXCELLENT		
Fluorescence	NONE		
Inscription(s)	IGI LG801696951		

Comments: This Laboratory Grown Diamond was created by Chemical Vapor Deposition (CVD) growth process. Type IIa