



**ELECTRONIC COPY**

LG801699109  
Report verification at igi.org



May 16, 2026

IGI Report Number **LG801699109**

Description **LABORATORY GROWN DIAMOND**

Shape and Cutting Style **CUT CORNERED  
RECTANGULAR MODIFIED  
BRILLIANT**

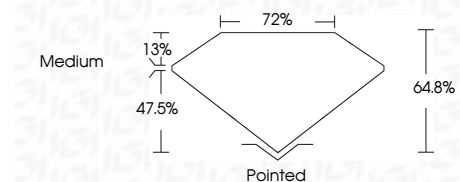
Measurements **10.77 X 7.59 X 4.92 MM**

**GRADING RESULTS**

Carat Weight **3.52 CARATS**

Color Grade **F**

Clarity Grade **VVS 2**



**ADDITIONAL GRADING INFORMATION**

Polish **EXCELLENT**

Symmetry **EXCELLENT**

Fluorescence **NONE**

Inscription(s) **IGI LG801699109**

Comments: This Laboratory Grown Diamond was created by Chemical Vapor Deposition (CVD) growth process. Type IIa



|              |                           |                                       |                        |              |             |               |       |       |        |         |           |           |              |                 |
|--------------|---------------------------|---------------------------------------|------------------------|--------------|-------------|---------------|-------|-------|--------|---------|-----------|-----------|--------------|-----------------|
| May 16, 2026 | IGI Report No LG801699109 | CUT CORNERED RECT. MODIFIED BRILLIANT | 10.77 X 7.59 X 4.92 MM | 3.52 CARATS  | F           | VVS 2         | 64.8% | 72%   | Medium | Pointed | EXCELLENT | EXCELLENT | NONE         | IGI LG801699109 |
| Polish       | Symmetry                  | Fluorescence                          | Inscription(s)         | Carat Weight | Color Grade | Clarity Grade | Depth | Table | Girdle | Culet   | Polish    | Symmetry  | Fluorescence | Inscription(s)  |

Comments: This Laboratory Grown Diamond was created by Chemical Vapor Deposition (CVD) growth process. Type IIa

**LABORATORY GROWN DIAMOND REPORT**

May 16, 2026  
IGI Report Number **LG801699109**  
Description **LABORATORY GROWN DIAMOND**  
Shape and Cutting Style **CUT CORNERED RECTANGULAR  
MODIFIED BRILLIANT**  
Measurements **10.77 X 7.59 X 4.92 MM**

**GRADING RESULTS**

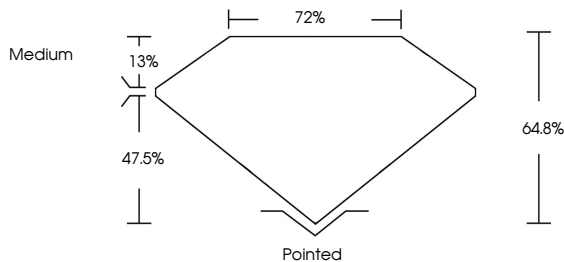
Carat Weight **3.52 CARATS**  
Color Grade **F**  
Clarity Grade **VVS 2**

**ADDITIONAL GRADING INFORMATION**

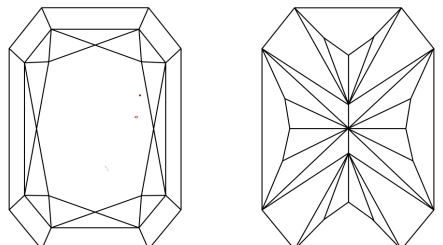
Polish **EXCELLENT**  
Symmetry **EXCELLENT**  
Fluorescence **NONE**  
Inscription(s) **IGI LG801699109**

Comments: This Laboratory Grown Diamond was created by Chemical Vapor Deposition (CVD) growth process. Type IIa

**PROPORTIONS**

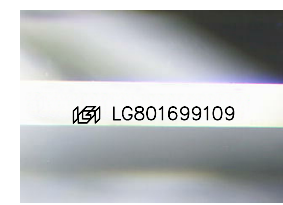


**CLARITY CHARACTERISTICS**



**KEY TO SYMBOLS**

Red symbols indicate internal characteristics.  
Green symbols indicate external characteristics.



Sample Image Used

**COLOR**

|   |   |   |   |   |   |   |       |            |       |
|---|---|---|---|---|---|---|-------|------------|-------|
| D | E | F | G | H | I | J | Faint | Very Light | Light |
|---|---|---|---|---|---|---|-------|------------|-------|

**CLARITY**

|          |                     |                             |                        |                   |                  |
|----------|---------------------|-----------------------------|------------------------|-------------------|------------------|
| FL       | IF                  | VVS <sup>1-2</sup>          | VS <sup>1-2</sup>      | SI <sup>1-2</sup> | I <sup>1-3</sup> |
| Flawless | Internally Flawless | Very Very Slightly Included | Very Slightly Included | Slightly Included | Included         |

