



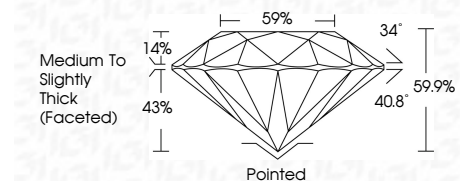
ELECTRONIC COPY

LG802603017 Report verification at igi.org



May 20, 2026 IGI Report Number LG802603017 Description LABORATORY GROWN DIAMOND Shape and Cutting Style ROUND BRILLIANT Measurements 6.69 - 6.75 X 4.03 MM

GRADING RESULTS Carat Weight 1.10 CARAT Color Grade E Clarity Grade VVS 2 Cut Grade IDEAL



ADDITIONAL GRADING INFORMATION Polish EXCELLENT Symmetry EXCELLENT Fluorescence NONE Inscription(s) LG802603017 Comments: This Laboratory Grown Diamond was created by Chemical Vapor Deposition (CVD) growth process. Type IIa



May 20, 2026 IGI Report No LG802603017 ROUND BRILLIANT 6.69 - 6.75 X 4.03 MM 1.10 CARAT E VVS 2 IDEAL 59.9% 59% Medium To Slightly Thick (Faceted) Pointed EXCELLENT EXCELLENT NONE NONE LG802603017

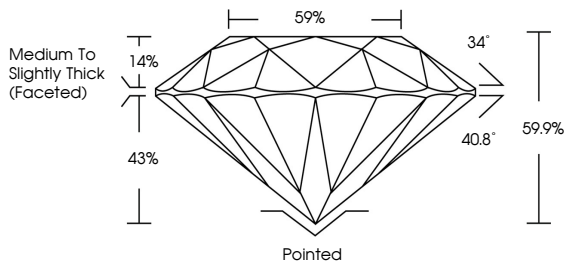
May 20, 2026 IGI Report Number LG802603017 Description LABORATORY GROWN DIAMOND Shape and Cutting Style ROUND BRILLIANT Measurements 6.69 - 6.75 X 4.03 MM

GRADING RESULTS Carat Weight 1.10 CARAT Color Grade E Clarity Grade VVS 2 Cut Grade IDEAL

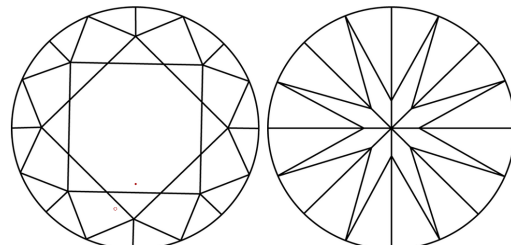
ADDITIONAL GRADING INFORMATION Polish EXCELLENT Symmetry EXCELLENT Fluorescence NONE Inscription(s) LG802603017

Comments: This Laboratory Grown Diamond was created by Chemical Vapor Deposition (CVD) growth process. Type IIa

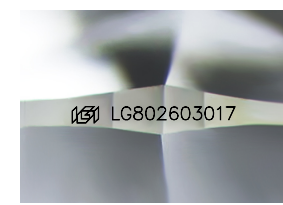
PROPORTIONS



CLARITY CHARACTERISTICS



KEY TO SYMBOLS Red symbols indicate internal characteristics. Green symbols indicate external characteristics.



Sample Image Used

Table with 10 columns: D, E, F, G, H, I, J, Faint, Very Light, Light

Table with 6 columns: FL, IF, VS 1-2, VS 1-2, SI 1-2, I 1-3



THIS DOCUMENT WAS PRODUCED WITH THE FOLLOWING SECURITY MEASURES: SPECIAL DOCUMENT PAPER, INK SCREENS, WATERMARK BACKGROUND DESIGNS, HOLOGRAM AND OTHER SECURITY FEATURES NOT LISTED AND DO EXCEED DOCUMENT SECURITY INDUSTRY GUIDELINES.