



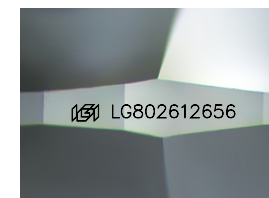
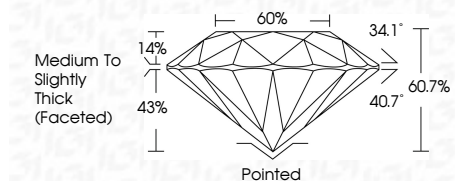
ELECTRONIC COPY

LG802612656 Report verification at igi.org



May 22, 2026 IGI Report Number LG802612656 Description LABORATORY GROWN DIAMOND Shape and Cutting Style ROUND BRILLIANT Measurements 10.68 - 10.73 X 6.49 MM

GRADING RESULTS Carat Weight 4.58 CARATS Color Grade E Clarity Grade VS 1 Cut Grade IDEAL



Sample Image Used

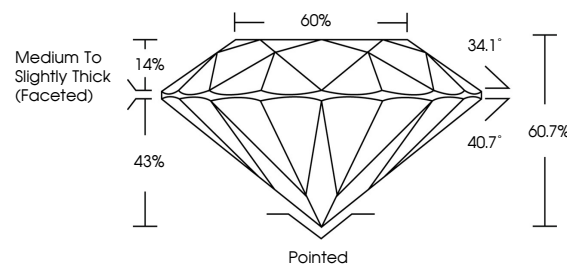
ADDITIONAL GRADING INFORMATION Polish EXCELLENT Symmetry EXCELLENT Fluorescence NONE Inscription(s) IGI LG802612656 Comments: This Laboratory Grown Diamond was created by Chemical Vapor Deposition (CVD) growth process. Type IIa



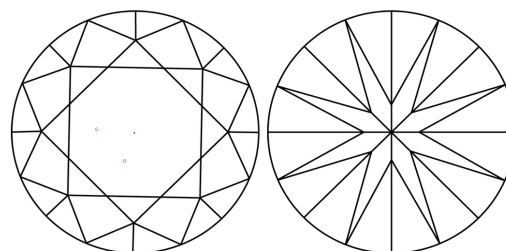
May 22, 2026 IGI Report No. LG802612656 ROUND BRILLIANT 10.68 - 10.73 X 6.49 MM 4.58 CARATS E VS 1 IDEAL 60.7% 60% Medium To Slightly Thick (Faceted) Pointed EXCELLENT EXCELLENT NONE IGI LG802612656

Comments: This Laboratory Grown Diamond was created by Chemical Vapor Deposition (CVD) growth process. Type IIa

PROPORTIONS



CLARITY CHARACTERISTICS



KEY TO SYMBOLS

Red symbols indicate internal characteristics. Green symbols indicate external characteristics.

COLOR

D E F G H I J Faint Very Light Light

CLARITY

FL IF VS 1-2 VS 2-3 SI 1-2 I 1-3 Flawless Internally Flawless Very Very Slightly Included Very Slightly Included Slightly Included Included

