



ELECTRONIC COPY

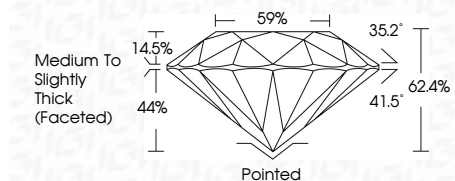
LG802616954 Report verification at igi.org



May 20, 2026 IGI Report Number LG802616954 Description LABORATORY GROWN DIAMOND Shape and Cutting Style ROUND BRILLIANT Measurements 6.54 - 6.56 X 4.09 MM

GRADING RESULTS

Carat Weight 1.07 CARAT Color Grade D Clarity Grade VS 1 Cut Grade IDEAL



ADDITIONAL GRADING INFORMATION

Polish EXCELLENT Symmetry EXCELLENT Fluorescence NONE Inscription(s) LG802616954 Comments: This Laboratory Grown Diamond was created by Chemical Vapor Deposition (CVD) growth process. Type IIa



May 20, 2026 IGI Report No LG802616954 ROUND BRILLIANT 1.07 CARAT D 6.54 - 6.56 X 4.09 MM Color Grade VS 1 IDEAL 62.4% 59% Medium To Slightly Thick (Faceted) Pointed EXCELLENT EXCELLENT NONE NONE LG802616954 Comments: This Laboratory Grown Diamond was created by Chemical Vapor Deposition (CVD) growth process. Type IIa

May 20, 2026 IGI Report Number LG802616954 Description LABORATORY GROWN DIAMOND Shape and Cutting Style ROUND BRILLIANT Measurements 6.54 - 6.56 X 4.09 MM

GRADING RESULTS

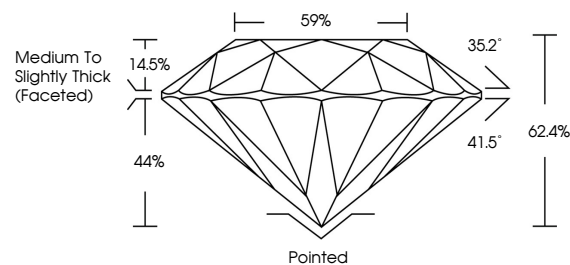
Carat Weight 1.07 CARAT Color Grade D Clarity Grade VS 1 Cut Grade IDEAL

ADDITIONAL GRADING INFORMATION

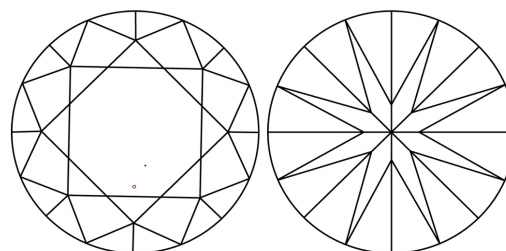
Polish EXCELLENT Symmetry EXCELLENT Fluorescence NONE Inscription(s) LG802616954

Comments: This Laboratory Grown Diamond was created by Chemical Vapor Deposition (CVD) growth process. Type IIa

PROPORTIONS

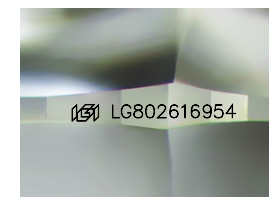


CLARITY CHARACTERISTICS



KEY TO SYMBOLS

Red symbols indicate internal characteristics. Green symbols indicate external characteristics.



Sample Image Used

COLOR

D E F G H I J Faint Very Light Light

CLARITY

FL IF VS 1-2 VS 1-2 SI 1-2 I 1-3 Flawless Internally Flawless Very Very Slightly Included Very Slightly Included Slightly Included Included

