



**ELECTRONIC COPY**

LG802617216  
Report verification at igi.org



May 19, 2026

IGI Report Number **LG802617216**

Description **LABORATORY GROWN DIAMOND**

Shape and Cutting Style **ROUND BRILLIANT**

Measurements **7.44 - 7.49 X 4.63 MM**

**GRADING RESULTS**

Carat Weight **1.56 CARAT**

Color Grade **D**

Clarity Grade **VVS 2**

Cut Grade **IDEAL**

May 19, 2026  
IGI Report Number **LG802617216**  
Description **LABORATORY GROWN DIAMOND**  
Shape and Cutting Style **ROUND BRILLIANT**  
Measurements **7.44 - 7.49 X 4.63 MM**

**GRADING RESULTS**

Carat Weight **1.56 CARAT**

Color Grade **D**

Clarity Grade **VVS 2**

Cut Grade **IDEAL**

**ADDITIONAL GRADING INFORMATION**

Polish **EXCELLENT**

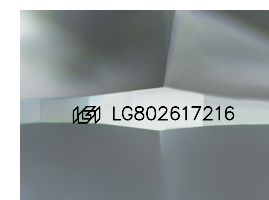
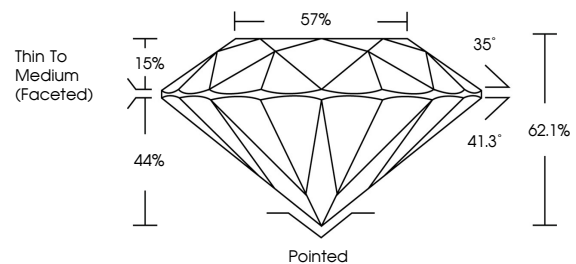
Symmetry **EXCELLENT**

Fluorescence **NONE**

Inscription(s) **IGI LG802617216**

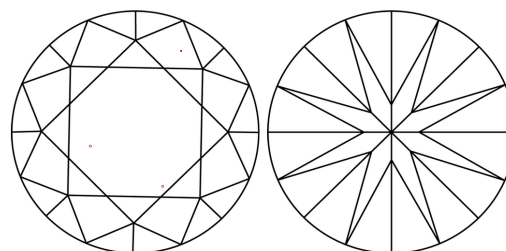
Comments: This Laboratory Grown Diamond was created by Chemical Vapor Deposition (CVD) growth process.  
Type IIa

**PROPORTIONS**



Sample Image Used

**CLARITY CHARACTERISTICS**



**KEY TO SYMBOLS**

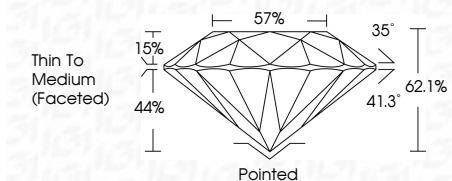
Red symbols indicate internal characteristics.  
Green symbols indicate external characteristics.

**COLOR**

D E F G H I J Faint Very Light Light

**CLARITY**

FL	IF	VVS <sup>1-2</sup>	VS <sup>1-2</sup>	SI <sup>1-2</sup>	I <sup>1-3</sup>
Flawless	Internally Flawless	Very Very Slightly Included	Very Slightly Included	Slightly Included	Included



**ADDITIONAL GRADING INFORMATION**

Polish **EXCELLENT**

Symmetry **EXCELLENT**

Fluorescence **NONE**

Inscription(s) **IGI LG802617216**

Comments: This Laboratory Grown Diamond was created by Chemical Vapor Deposition (CVD) growth process.  
Type IIa



**IGI**



May 19, 2026  
IGI Report No. LG802617216  
**ROUND BRILLIANT**  
7.44 - 7.49 X 4.63 MM  
1.56 CARAT  
Color Grade **D**  
Clarity Grade **VVS 2**  
Cut Grade **IDEAL**  
Depth **62.1%**  
Table **57%**  
Girdle **Thin To Medium (Faceted)**  
Culet **Pointed**  
Polish **EXCELLENT**  
Symmetry **EXCELLENT**  
Fluorescence **NONE**  
Inscription(s) **IGI LG802617216**  
Comments: This Laboratory Grown Diamond was created by Chemical Vapor Deposition (CVD) growth process.  
Type IIa