



**ELECTRONIC COPY**

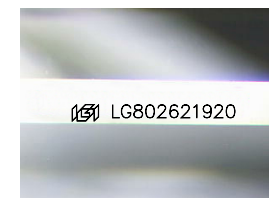
LG802621920  
Report verification at igi.org



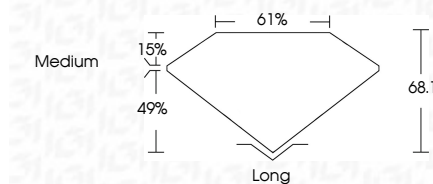
May 25, 2026  
IGI Report Number **LG802621920**  
Description **LABORATORY GROWN DIAMOND**  
Shape and Cutting Style **EMERALD CUT**  
Measurements **6.77 X 4.76 X 3.24 MM**

**GRADING RESULTS**

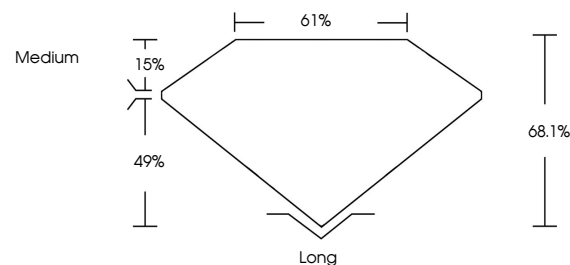
Carat Weight **1.01 CARAT**  
Color Grade **E**  
Clarity Grade **VVS 2**



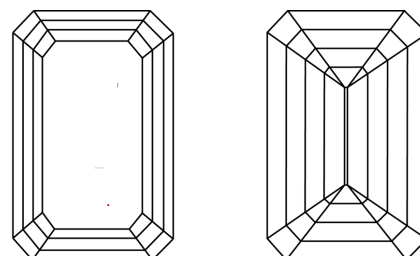
Sample Image Used



**PROPORTIONS**



**CLARITY CHARACTERISTICS**



**KEY TO SYMBOLS**

Red symbols indicate internal characteristics.  
Green symbols indicate external characteristics.

**COLOR**

D E F G H I J Faint Very Light Light

**CLARITY**

FL	IF	VVS <sup>1-2</sup>	VS <sup>1-2</sup>	SI <sup>1-2</sup>	I <sup>1-3</sup>
Flawless	Internally Flawless	Very Very Slightly Included	Very Slightly Included	Slightly Included	Included

**ADDITIONAL GRADING INFORMATION**

Polish **EXCELLENT**  
Symmetry **EXCELLENT**  
Fluorescence **NONE**  
Inscription(s) **IGI LG802621920**  
Comments: This Laboratory Grown Diamond was created by Chemical Vapor Deposition (CVD) growth process.  
Type IIa



**IGI**



May 25, 2026  
IGI Report No. LG802621920  
**EMERALD CUT**  
1.01 CARAT **E**  
Carat Weight **VVS 2**  
Color Grade **68.1%**  
Clarity Grade **61%**  
Depth **Medium**  
Table **Long**  
Girdle **EXCELLENT**  
Culet **EXCELLENT**  
Polish **NONE**  
Symmetry **NONE**  
Fluorescence **NONE**  
Inscription(s) **IGI LG802621920**  
Comments: This Laboratory Grown Diamond was created by Chemical Vapor Deposition (CVD) growth process.  
Type IIa