



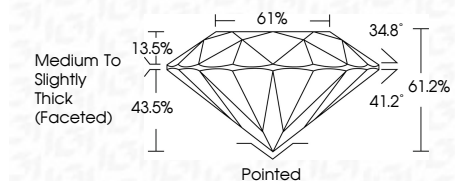
ELECTRONIC COPY

LG802633981 Report verification at igi.org



May 19, 2026 IGI Report Number LG802633981 Description LABORATORY GROWN DIAMOND Shape and Cutting Style ROUND BRILLIANT Measurements 8.57 - 8.60 X 5.25 MM

GRADING RESULTS Carat Weight 2.41 CARATS Color Grade E Clarity Grade VS 2 Cut Grade EXCELLENT



ADDITIONAL GRADING INFORMATION Polish EXCELLENT Symmetry EXCELLENT Fluorescence NONE Inscription(s) IGI LG802633981 Comments: This Laboratory Grown Diamond was created by Chemical Vapor Deposition (CVD) growth process. Type IIa



May 19, 2026 IGI Report No. LG802633981 ROUND BRILLIANT 8.57 - 8.60 X 5.25 MM 2.41 CARATS E VS 2 EXCELLENT 61.2% 61% Medium To Slightly Thick (Faceted) Pointed EXCELLENT EXCELLENT NONE IGI LG802633981 Comments: This Laboratory Grown Diamond was created by Chemical Vapor Deposition (CVD) growth process. Type IIa

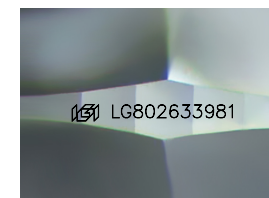
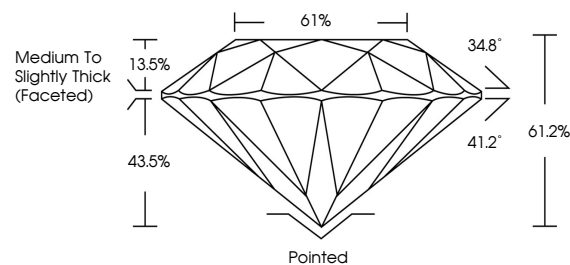
May 19, 2026 IGI Report Number LG802633981 Description LABORATORY GROWN DIAMOND Shape and Cutting Style ROUND BRILLIANT Measurements 8.57 - 8.60 X 5.25 MM

GRADING RESULTS Carat Weight 2.41 CARATS Color Grade E Clarity Grade VS 2 Cut Grade EXCELLENT

ADDITIONAL GRADING INFORMATION Polish EXCELLENT Symmetry EXCELLENT Fluorescence NONE Inscription(s) IGI LG802633981

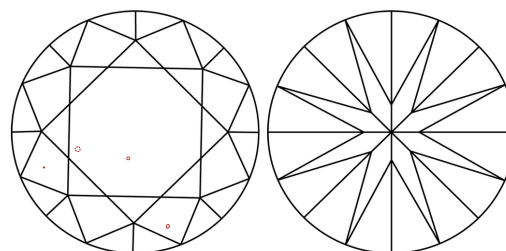
Comments: This Laboratory Grown Diamond was created by Chemical Vapor Deposition (CVD) growth process. Type IIa

PROPORTIONS



Sample Image Used

CLARITY CHARACTERISTICS



KEY TO SYMBOLS

Red symbols indicate internal characteristics. Green symbols indicate external characteristics.

COLOR

D E F G H I J Faint Very Light Light

CLARITY

FL IF VS 1-2 VS 1-2 SI 1-2 I 1-3 Flawless Internally Flawless Very Very Slightly Included Very Slightly Included Slightly Included Included

