



**ELECTRONIC COPY**

LG802636271  
Report verification at igi.org



May 25, 2026

IGI Report Number **LG802636271**

Description **LABORATORY GROWN DIAMOND**

Shape and Cutting Style **CUT CORNERED  
RECTANGULAR MODIFIED  
BRILLIANT**

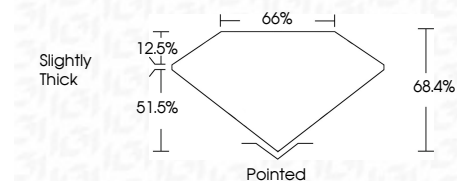
Measurements **8.98 X 6.17 X 4.22 MM**

**GRADING RESULTS**

Carat Weight **2.04 CARATS**

Color Grade **D**

Clarity Grade **VS 1**



**ADDITIONAL GRADING INFORMATION**

Polish **EXCELLENT**

Symmetry **EXCELLENT**

Fluorescence **NONE**

Inscription(s) **IGI LG802636271**

Comments: This Laboratory Grown Diamond was created by Chemical Vapor Deposition (CVD) growth process. Type IIa



|                                       |                            |
|---------------------------------------|----------------------------|
| May 25, 2026                          | IGI Report No. LG802636271 |
| CUT CORNERED RECT. MODIFIED BRILLIANT |                            |
| 8.98 X 6.17 X 4.22 MM                 |                            |
| 2.04 CARATS                           |                            |
| D                                     |                            |
| VS 1                                  |                            |
| 68.4%                                 |                            |
| 51.5%                                 |                            |
| Slightly Thick                        |                            |
| Pointed                               |                            |
| EXCELLENT                             |                            |
| EXCELLENT                             |                            |
| NONE                                  |                            |
| IGI LG802636271                       |                            |

Comments: This Laboratory Grown Diamond was created by Chemical Vapor Deposition (CVD) growth process. Type IIa

**LABORATORY GROWN DIAMOND REPORT**

May 25, 2026

IGI Report Number **LG802636271**

Description **LABORATORY GROWN DIAMOND**

Shape and Cutting Style **CUT CORNERED RECTANGULAR  
MODIFIED BRILLIANT**

Measurements **8.98 X 6.17 X 4.22 MM**

**GRADING RESULTS**

Carat Weight **2.04 CARATS**

Color Grade **D**

Clarity Grade **VS 1**

**ADDITIONAL GRADING INFORMATION**

Polish **EXCELLENT**

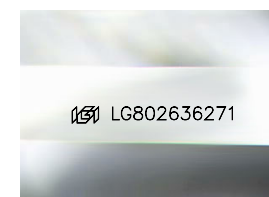
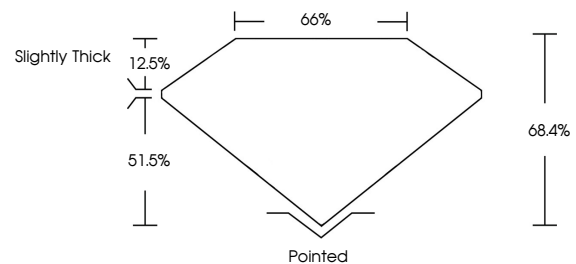
Symmetry **EXCELLENT**

Fluorescence **NONE**

Inscription(s) **IGI LG802636271**

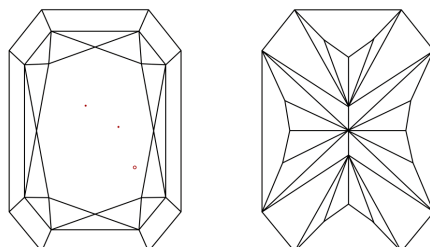
Comments: This Laboratory Grown Diamond was created by Chemical Vapor Deposition (CVD) growth process. Type IIa

**PROPORTIONS**



Sample Image Used

**CLARITY CHARACTERISTICS**



**KEY TO SYMBOLS**

Red symbols indicate internal characteristics.  
Green symbols indicate external characteristics.

**COLOR**

D E F G H I J Faint Very Light Light

**CLARITY**

|          |                     |                             |                        |                   |                  |
|----------|---------------------|-----------------------------|------------------------|-------------------|------------------|
| FL       | IF                  | VS <sup>1-2</sup>           | VS <sup>1-2</sup>      | SI <sup>1-2</sup> | I <sup>1-3</sup> |
| Flawless | Internally Flawless | Very Very Slightly Included | Very Slightly Included | Slightly Included | Included         |

