



ELECTRONIC COPY

LG803607201 Report verification at igi.org



May 21, 2026 IGI Report Number LG803607201 Description LABORATORY GROWN DIAMOND Shape and Cutting Style OVAL BRILLIANT Measurements 8.37 X 5.77 X 3.62 MM GRADING RESULTS Carat Weight 1.10 CARAT Color Grade F Clarity Grade VVS 2

LABORATORY GROWN DIAMOND REPORT

May 21, 2026 IGI Report Number LG803607201 Description LABORATORY GROWN DIAMOND Shape and Cutting Style OVAL BRILLIANT Measurements 8.37 X 5.77 X 3.62 MM

GRADING RESULTS

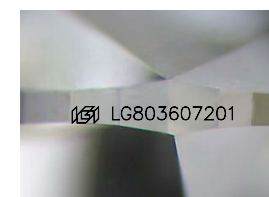
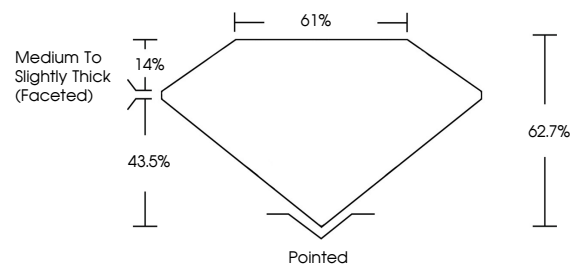
Carat Weight 1.10 CARAT Color Grade F Clarity Grade VVS 2

ADDITIONAL GRADING INFORMATION

Polish EXCELLENT Symmetry EXCELLENT Fluorescence NONE Inscription(s) LG803607201

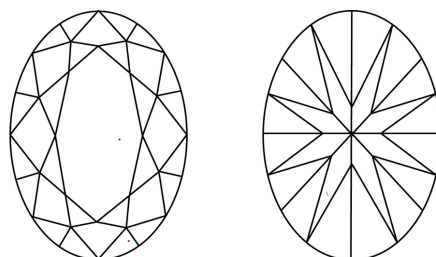
Comments: This Laboratory Grown Diamond was created by Chemical Vapor Deposition (CVD) growth process. Type IIa

PROPORTIONS



Sample Image Used

CLARITY CHARACTERISTICS



KEY TO SYMBOLS

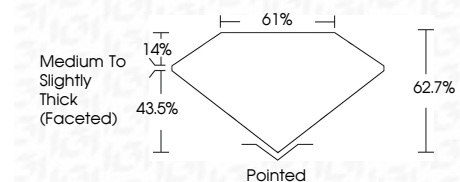
Red symbols indicate internal characteristics. Green symbols indicate external characteristics.

COLOR

D E F G H I J Faint Very Light Light

CLARITY

FL IF VS 1-2 VS 1-2 SI 1-2 I 1-3 Flawless Internally Flawless Very Very Slightly Included Very Slightly Included Slightly Included Included



ADDITIONAL GRADING INFORMATION

Polish EXCELLENT Symmetry EXCELLENT Fluorescence NONE Inscription(s) LG803607201 Comments: This Laboratory Grown Diamond was created by Chemical Vapor Deposition (CVD) growth process. Type IIa



May 21, 2026 IGI Report No LG803607201 OVAL BRILLIANT 1.10 CARAT F 8.37 X 5.77 X 3.62 MM Color Grade VS 2 Depth 43.5% Table 14% Girdle Medium to Slightly Thick (Faceted) Pointed EXCELLENT EXCELLENT NONE NONE LG803607201 Comments: This Laboratory Grown Diamond was created by Chemical Vapor Deposition (CVD) growth process. Type IIa