



ELECTRONIC COPY

LG803616699
Report verification at igi.org



May 23, 2026

IGI Report Number **LG803616699**

Description **LABORATORY GROWN DIAMOND**

Shape and Cutting Style **EMERALD CUT**

Measurements **7.20 X 4.59 X 3.25 MM**

GRADING RESULTS

Carat Weight **1.07 CARAT**

Color Grade **FANCY VIVID GREEN**

Clarity Grade **VS 2**

LABORATORY GROWN DIAMOND REPORT

May 23, 2026

IGI Report Number **LG803616699**

Description **LABORATORY GROWN DIAMOND**

Shape and Cutting Style **EMERALD CUT**

Measurements **7.20 X 4.59 X 3.25 MM**

GRADING RESULTS

Carat Weight **1.07 CARAT**

Color Grade **FANCY VIVID GREEN**

Clarity Grade **VS 2**

ADDITIONAL GRADING INFORMATION

Polish **EXCELLENT**

Symmetry **EXCELLENT**

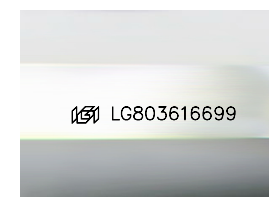
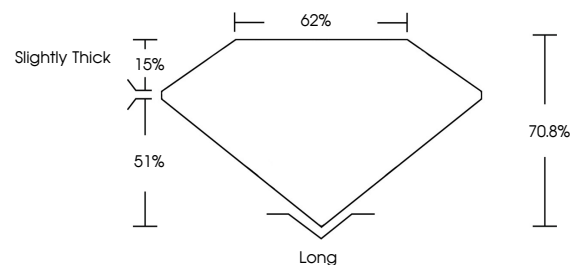
Fluorescence **NONE**

Inscription(s) **IGI LG803616699**

Comments: This Laboratory Grown Diamond was created by Chemical Vapor Deposition (CVD) growth process.

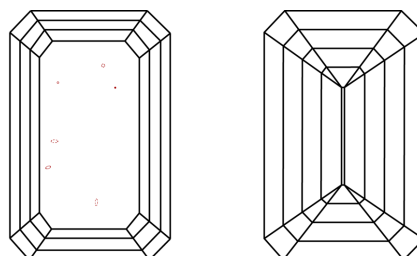
Indications of post-growth treatment.

PROPORTIONS



Sample Image Used

CLARITY CHARACTERISTICS



KEY TO SYMBOLS

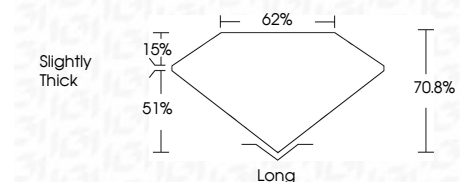
Red symbols indicate internal characteristics.
Green symbols indicate external characteristics.

COLOR

D E F G H I J Faint Very Light Light

CLARITY

FL	IF	VS ¹⁻²	VS ¹⁻²	SI ¹⁻²	I ¹⁻³
Flawless	Internally Flawless	Very Very Slightly Included	Very Slightly Included	Slightly Included	Included



ADDITIONAL GRADING INFORMATION

Polish **EXCELLENT**

Symmetry **EXCELLENT**

Fluorescence **NONE**

Inscription(s) **IGI LG803616699**

Comments: This Laboratory Grown Diamond was created by Chemical Vapor Deposition (CVD) growth process. Indications of post-growth treatment.



May 23, 2026	IGI Report No. LG803616699	EMERALD CUT	1.07 CARAT	FANCY VIVID GREEN	VS 2	70.8%	62%	Slightly Thick	Long	EXCELLENT	EXCELLENT	NONE	IGI LG803616699
7.20 X 4.59 X 3.25 MM	Carat Weight	Color Grade	Clarity Grade	Table	Depth	Girdle	Culet	Polish	Symmetry	Fluorescence	Inscription(s)	Comments: This Laboratory Grown Diamond was created by Chemical Vapor Deposition (CVD) growth process. Indications of post-growth treatment.	