



ELECTRONIC COPY

LG803617863 Report verification at igi.org



May 19, 2026 IGI Report Number LG803617863 Description LABORATORY GROWN DIAMOND Shape and Cutting Style CUT CORNERED RECTANGULAR MODIFIED BRILLIANT Measurements 7.37 X 4.98 X 3.40 MM GRADING RESULTS Carat Weight 1.06 CARAT Color Grade G Clarity Grade VVS 2

LABORATORY GROWN DIAMOND REPORT

May 19, 2026 IGI Report Number LG803617863 Description LABORATORY GROWN DIAMOND Shape and Cutting Style CUT CORNERED RECTANGULAR MODIFIED BRILLIANT Measurements 7.37 X 4.98 X 3.40 MM

GRADING RESULTS

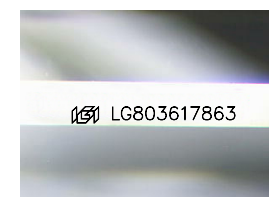
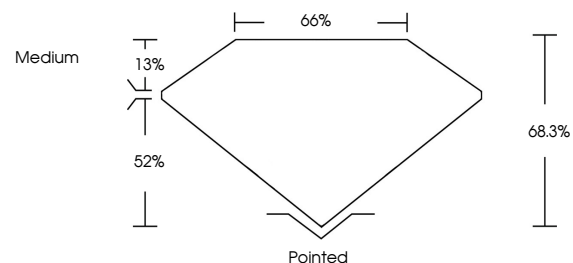
Carat Weight 1.06 CARAT Color Grade G Clarity Grade VVS 2

ADDITIONAL GRADING INFORMATION

Polish EXCELLENT Symmetry EXCELLENT Fluorescence NONE Inscription(s) LG803617863

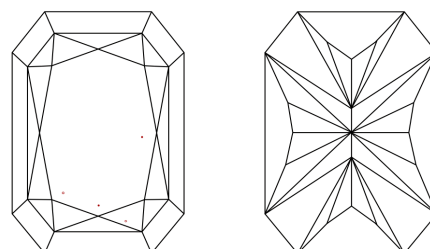
Comments: This Laboratory Grown Diamond was created by Chemical Vapor Deposition (CVD) growth process. Type IIa

PROPORTIONS



Sample Image Used

CLARITY CHARACTERISTICS



KEY TO SYMBOLS

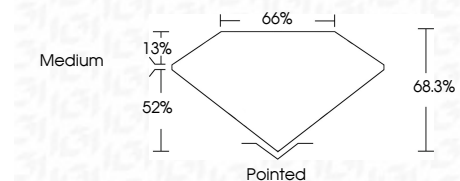
Red symbols indicate internal characteristics. Green symbols indicate external characteristics.

COLOR

D E F G H I J Faint Very Light Light

CLARITY

FL IF VVS 1-2 VS 1-2 SI 1-2 I 1-3 Flawless Internally Flawless Very Very Slightly Included Very Slightly Included Slightly Included Included



ADDITIONAL GRADING INFORMATION

Polish EXCELLENT Symmetry EXCELLENT Fluorescence NONE Inscription(s) LG803617863 Comments: This Laboratory Grown Diamond was created by Chemical Vapor Deposition (CVD) growth process. Type IIa



May 19, 2026 IGI Report No LG803617863 CUT CORNERED RECT. MODIFIED BRILLIANT 7.37 X 4.98 X 3.40 MM 1.06 CARAT G VVS 2 68.3% 65% Medium Pointed EXCELLENT EXCELLENT NONE LG803617863 Comments: This Laboratory Grown Diamond was created by Chemical Vapor Deposition (CVD) growth process. Type IIa