



ELECTRONIC COPY

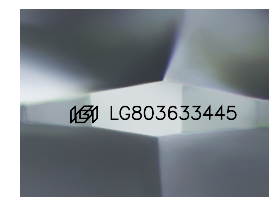
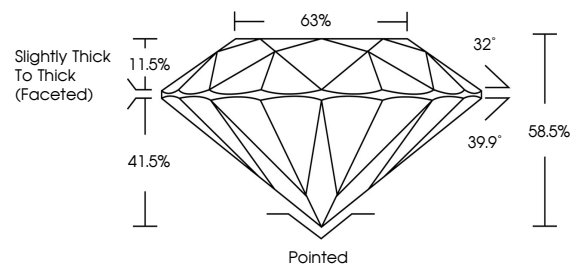
LG803633445
Report verification at igi.org



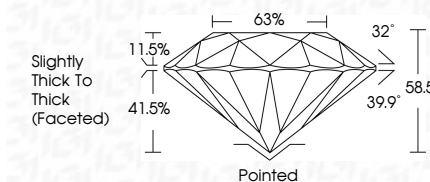
May 19, 2026
IGI Report Number LG803633445
Description LABORATORY GROWN DIAMOND
Shape and Cutting Style ROUND BRILLIANT
Measurements 8.07 - 8.16 X 4.75 MM
GRADING RESULTS
Carat Weight 2.00 CARATS
Color Grade E
Clarity Grade VS 2
Cut Grade VERY GOOD

May 19, 2026
IGI Report Number LG803633445
Description LABORATORY GROWN DIAMOND
Shape and Cutting Style ROUND BRILLIANT
Measurements 8.07 - 8.16 X 4.75 MM
GRADING RESULTS
Carat Weight 2.00 CARATS
Color Grade E
Clarity Grade VS 2
Cut Grade VERY GOOD

PROPORTIONS



Sample Image Used



ADDITIONAL GRADING INFORMATION

Polish EXCELLENT
Symmetry VERY GOOD
Fluorescence NONE
Inscription(s) LG803633445

Comments: This Laboratory Grown Diamond was created by Chemical Vapor Deposition (CVD) growth process. Type IIa

ADDITIONAL GRADING INFORMATION

Polish EXCELLENT
Symmetry VERY GOOD
Fluorescence NONE
Inscription(s) LG803633445
Comments: This Laboratory Grown Diamond was created by Chemical Vapor Deposition (CVD) growth process. Type IIa

COLOR

D E F G H I J Faint Very Light Light

CLARITY

FL IF VS 1-2 VS 1-2 SI 1-2 I 1-3
Flawless Internally Flawless Very Very Slightly Very Slightly Slightly Included Included



May 19, 2026
IGI Report No. LG803633445
ROUND BRILLIANT
8.07 - 8.16 X 4.75 MM
2.00 CARATS
Color Grade E
Clarity Grade VS 2
Depth 88.05%
Table 68%
Girdle Slightly Thick To Thick (Faceted)
Culet Pointed
Polish EXCELLENT
Symmetry VERY GOOD
Fluorescence NONE
Inscription(s) IGI LG803633445
Comments: This Laboratory Grown Diamond was created by Chemical Vapor Deposition (CVD) growth process. Type IIa