



**ELECTRONIC COPY**

LG803634295  
Report verification at igi.org



May 23, 2026

IGI Report Number **LG803634295**

Description **LABORATORY GROWN DIAMOND**

Shape and Cutting Style **ROUND BRILLIANT**

Measurements **6.44 - 6.48 X 4.06 MM**

**GRADING RESULTS**

Carat Weight **1.05 CARAT**

Color Grade **D**

Clarity Grade **VS 1**

Cut Grade **EXCELLENT**

May 23, 2026  
IGI Report Number **LG803634295**  
Description **LABORATORY GROWN DIAMOND**  
Shape and Cutting Style **ROUND BRILLIANT**  
Measurements **6.44 - 6.48 X 4.06 MM**

**GRADING RESULTS**

Carat Weight **1.05 CARAT**

Color Grade **D**

Clarity Grade **VS 1**

Cut Grade **EXCELLENT**

**ADDITIONAL GRADING INFORMATION**

Polish **EXCELLENT**

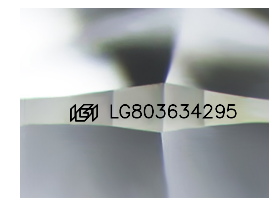
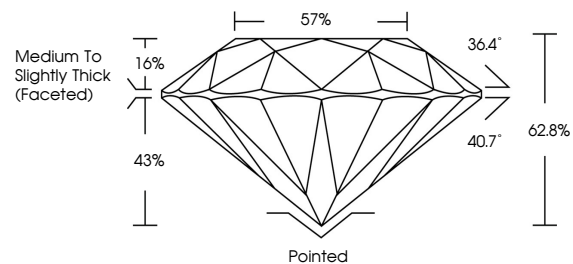
Symmetry **EXCELLENT**

Fluorescence **NONE**

Inscription(s) **LG803634295**

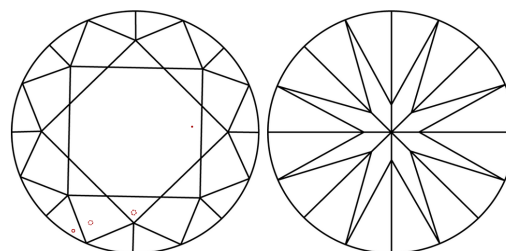
Comments: This Laboratory Grown Diamond was created by Chemical Vapor Deposition (CVD) growth process.  
Type IIa

**PROPORTIONS**



Sample Image Used

**CLARITY CHARACTERISTICS**



**KEY TO SYMBOLS**

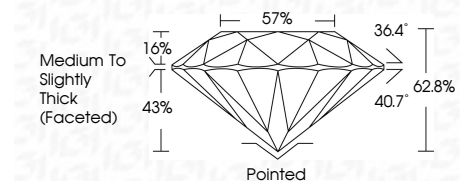
Red symbols indicate internal characteristics.  
Green symbols indicate external characteristics.

**COLOR**

D E F G H I J Faint Very Light Light

**CLARITY**

| FL       | IF                  | VS <sup>1-2</sup>           | VS <sup>1-2</sup>      | SI <sup>1-2</sup> | I <sup>1-3</sup> |
|----------|---------------------|-----------------------------|------------------------|-------------------|------------------|
| Flawless | Internally Flawless | Very Very Slightly Included | Very Slightly Included | Slightly Included | Included         |



**ADDITIONAL GRADING INFORMATION**

Polish **EXCELLENT**

Symmetry **EXCELLENT**

Fluorescence **NONE**

Inscription(s) **LG803634295**

Comments: This Laboratory Grown Diamond was created by Chemical Vapor Deposition (CVD) growth process.  
Type IIa



**IGI**



|                       |                            |                 |               |           |       |           |        |       |                                    |          |              |                |  |             |
|-----------------------|----------------------------|-----------------|---------------|-----------|-------|-----------|--------|-------|------------------------------------|----------|--------------|----------------|--|-------------|
| May 23, 2026          | IGI Report No. LG803634295 | ROUND BRILLIANT | 1.05 CARAT    | D         | VS 1  | EXCELLENT | 62.8%  | 57%   | Medium To Slightly Thick (Faceted) | Pointed  | EXCELLENT    | EXCELLENT      | NONE   | LG803634295 |
| 6.44 - 6.48 X 4.06 MM | Carat Weight               | Color Grade     | Clarity Grade | Cut Grade | Depth | Table     | Girdle | Culet | Polish                             | Symmetry | Fluorescence | Inscription(s) | Comments: This Laboratory Grown Diamond was created by Chemical Vapor Deposition (CVD) growth process.<br>Type IIa |             |