



ELECTRONIC COPY

LG803638135
Report verification at igi.org



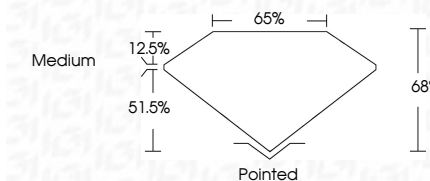
May 27, 2026
IGI Report Number LG803638135
Description LABORATORY GROWN DIAMOND

Shape and Cutting Style CUT CORNERED RECTANGULAR MODIFIED BRILLIANT

Measurements 7.17 X 5.15 X 3.50 MM

GRADING RESULTS

Carat Weight 1.09 CARAT
Color Grade E
Clarity Grade VS 2



ADDITIONAL GRADING INFORMATION

Polish EXCELLENT
Symmetry EXCELLENT
Fluorescence NONE
Inscription(s) LG803638135

Comments: This Laboratory Grown Diamond was created by Chemical Vapor Deposition (CVD) growth process. Type IIa



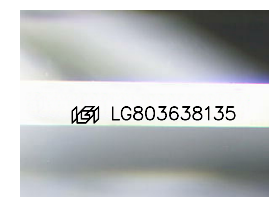
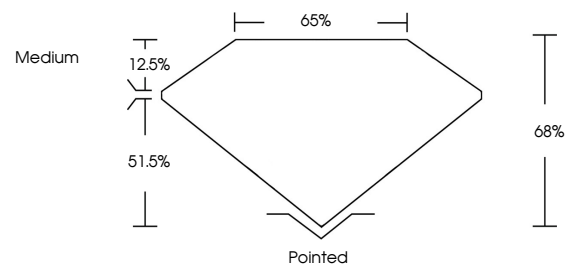
IGI



May 27, 2026
IGI Report No. LG803638135
CUT CORNERED RECT. MODIFIED BRILLIANT
7.17 X 5.15 X 3.50 MM
1.09 CARAT
E
VS 2
68%
65%
Medium
Pointed
EXCELLENT
EXCELLENT
NONE
Inscription(s) LG803638135

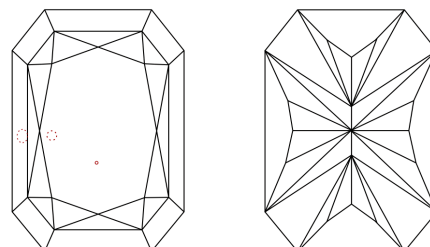
Comments: This Laboratory Grown Diamond was created by Chemical Vapor Deposition (CVD) growth process. Type IIa

PROPORTIONS



Sample Image Used

CLARITY CHARACTERISTICS



KEY TO SYMBOLS

Red symbols indicate internal characteristics.
Green symbols indicate external characteristics.

COLOR

D E F G H I J Faint Very Light Light

CLARITY

FL IF VS 1-2 VS 1-2 SI 1-2 I 1-3
Flawless Internally Flawless Very Very Slightly Included Very Slightly Included Slightly Included Included