



**ELECTRONIC COPY**

LG803643883  
Report verification at [igi.org](http://igi.org)



May 29, 2026  
IGI Report Number **LG803643883**  
Description **LABORATORY GROWN DIAMOND**  
Shape and Cutting Style **SQUARE CUSHION MODIFIED BRILLIANT**  
Measurements **6.82 X 6.67 X 4.80 MM**  
**GRADING RESULTS**  
Carat Weight **2.12 CARATS**  
Color Grade **LIGHT PINKISH BROWN**  
Clarity Grade **VVS 2**

**LABORATORY GROWN DIAMOND REPORT**

May 29, 2026  
IGI Report Number **LG803643883**  
Description **LABORATORY GROWN DIAMOND**  
Shape and Cutting Style **SQUARE CUSHION MODIFIED BRILLIANT**  
Measurements **6.82 X 6.67 X 4.80 MM**

**GRADING RESULTS**

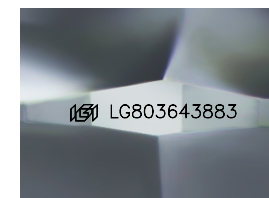
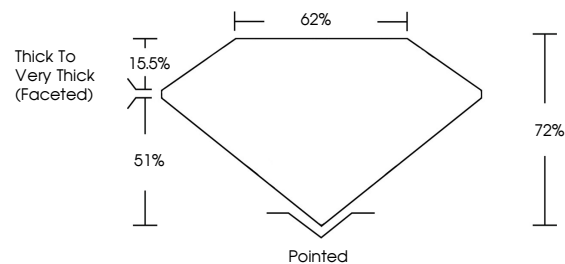
Carat Weight **2.12 CARATS**  
Color Grade **LIGHT PINKISH BROWN**  
Clarity Grade **VVS 2**

**ADDITIONAL GRADING INFORMATION**

Polish **EXCELLENT**  
Symmetry **EXCELLENT**  
Fluorescence **VERY SLIGHT**  
Inscription(s) **LG803643883**

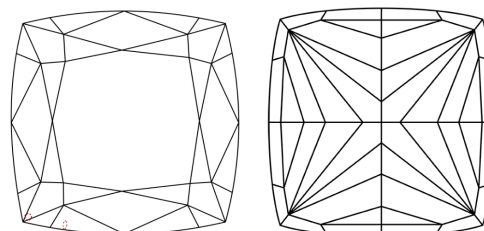
Comments: This Laboratory Grown Diamond was created by Chemical Vapor Deposition (CVD) growth process.  
Indications of post-growth treatment.

**PROPORTIONS**



Sample Image Used

**CLARITY CHARACTERISTICS**



**KEY TO SYMBOLS**

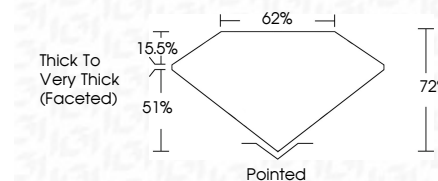
Red symbols indicate internal characteristics.  
Green symbols indicate external characteristics.

**COLOR**

D E F G H I J Faint Very Light Light

**CLARITY**

FL	IF	VVS <sup>1-2</sup>	VS <sup>1-2</sup>	SI <sup>1-2</sup>	I <sup>1-3</sup>
Flawless	Internally Flawless	Very Very Slightly Included	Very Slightly Included	Slightly Included	Included



**ADDITIONAL GRADING INFORMATION**

Polish **EXCELLENT**  
Symmetry **EXCELLENT**  
Fluorescence **VERY SLIGHT**  
Inscription(s) **LG803643883**  
Comments: This Laboratory Grown Diamond was created by Chemical Vapor Deposition (CVD) growth process.  
Indications of post-growth treatment.



May 29, 2026  
IGI Report No. **LG803643883**  
**SQUARE CUSHION MODIFIED BRILLIANT**  
**6.82 X 6.67 X 4.80 MM**  
Carat Weight **2.12 CARATS**  
Color Grade **LIGHT PINKISH BROWN**  
Clarity Grade **VVS 2**  
Depth **72%**  
Table **62%**  
Girdle **Thick to Very Thick (Faceted)**  
Culet **Pointed**  
Polish **EXCELLENT**  
Symmetry **EXCELLENT**  
Fluorescence **VERY SLIGHT**  
Inscription(s) **LG803643883**  
Comments: This Laboratory Grown Diamond was created by Chemical Vapor Deposition (CVD) growth process.  
Indications of post-growth treatment.