



ELECTRONIC COPY

LG803647398
Report verification at igi.org



June 2, 2026

IGI Report Number **LG803647398**

Description **LABORATORY GROWN DIAMOND**

Shape and Cutting Style **HEART MODIFIED BRILLIANT**

Measurements **8.27 X 9.61 X 5.22 MM**

GRADING RESULTS

Carat Weight **3.06 CARATS**

Color Grade **FANCY VIVID YELLOW**

Clarity Grade **VS 1**

June 2, 2026
IGI Report Number **LG803647398**
Description **LABORATORY GROWN DIAMOND**
Shape and Cutting Style **HEART MODIFIED BRILLIANT**
Measurements **8.27 X 9.61 X 5.22 MM**

GRADING RESULTS

Carat Weight **3.06 CARATS**

Color Grade **FANCY VIVID YELLOW**

Clarity Grade **VS 1**

ADDITIONAL GRADING INFORMATION

Polish **EXCELLENT**

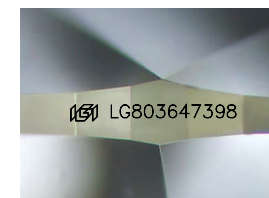
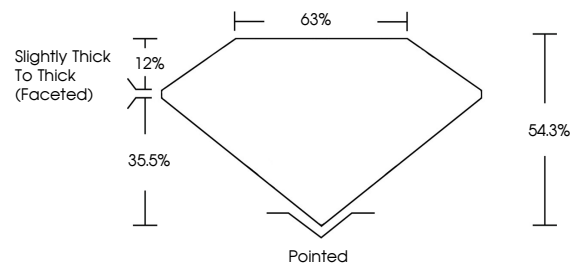
Symmetry **EXCELLENT**

Fluorescence **NONE**

Inscription(s) **IGI LG803647398**

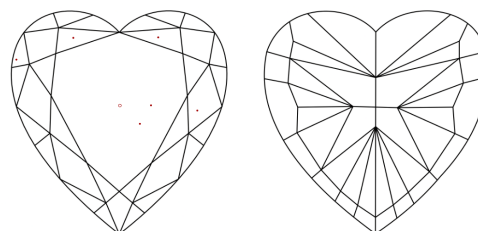
Comments: This Laboratory Grown Diamond was created by Chemical Vapor Deposition (CVD) growth process.

PROPORTIONS



Sample Image Used

CLARITY CHARACTERISTICS



KEY TO SYMBOLS

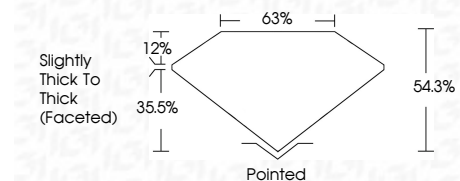
Red symbols indicate internal characteristics.
Green symbols indicate external characteristics.

COLOR

D E F G H I J Faint Very Light Light

CLARITY

FL	IF	VS ¹⁻²	VS ¹⁻²	SI ¹⁻²	I ¹⁻³
Flawless	Internally Flawless	Very Very Slightly Included	Very Slightly Included	Slightly Included	Included



ADDITIONAL GRADING INFORMATION

Polish **EXCELLENT**

Symmetry **EXCELLENT**

Fluorescence **NONE**

Inscription(s) **IGI LG803647398**

Comments: This Laboratory Grown Diamond was created by Chemical Vapor Deposition (CVD) growth process.



IGI



June 2, 2026
IGI Report No. **LG803647398**
HEART MODIFIED BRILLIANT
8.27 X 9.61 X 5.22 MM
Carat Weight **3.06 CARATS**
Color Grade **FANCY VIVID YELLOW**
Clarity Grade **VS 1**
Depth **54.3%**
Table **12%**
Girdle **Slightly Thick To Thick (Faceted)**
Culet **Pointed**
Polish **EXCELLENT**
Symmetry **EXCELLENT**
Fluorescence **NONE**
Inscription(s) **IGI LG803647398**

Comments: This Laboratory Grown Diamond was created by Chemical Vapor Deposition (CVD) growth process.